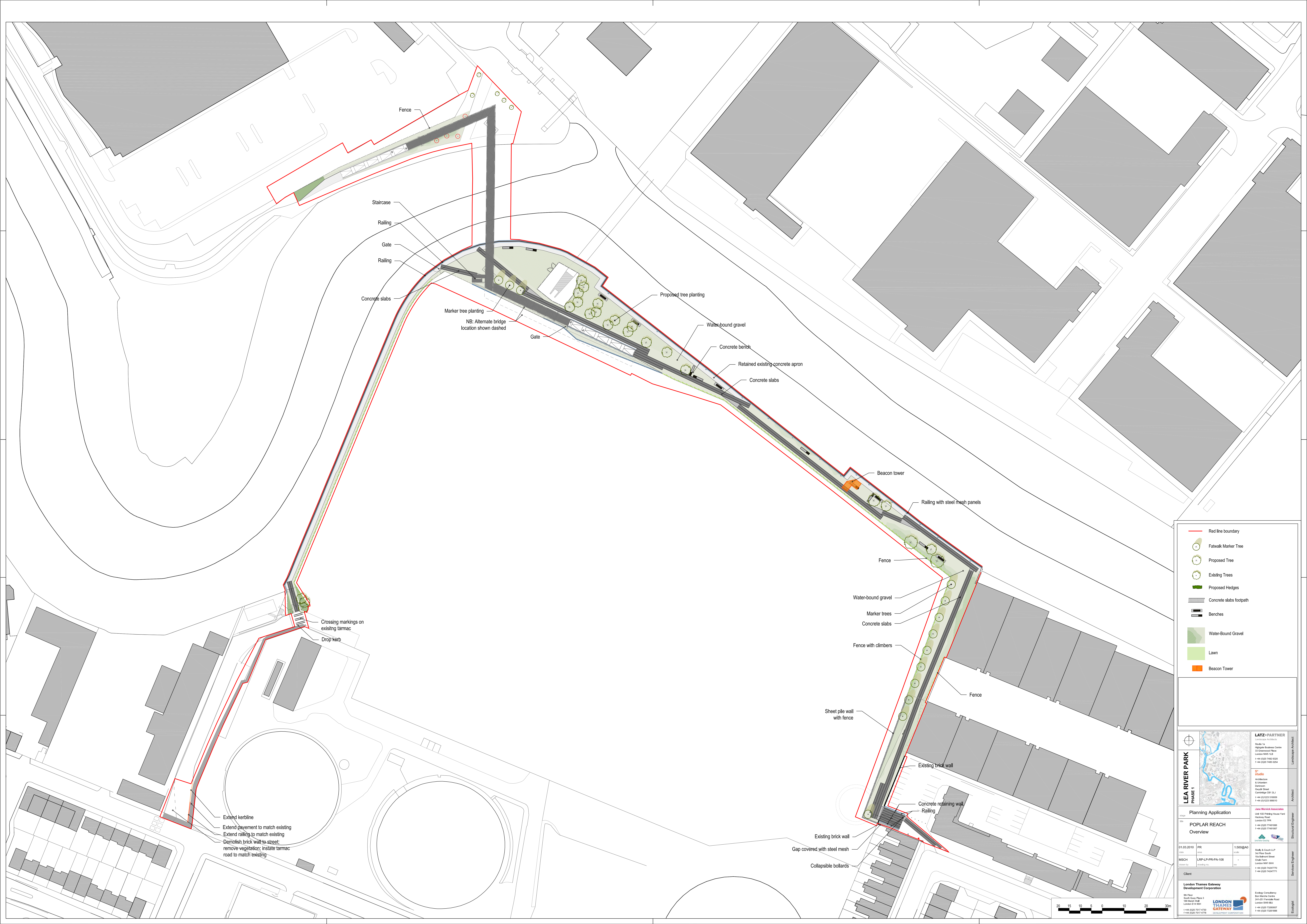


- Red line boundary
- Proposed Fatwalk
- x Marker Tree
- o Proposed Tree
- o Existing Trees
- Concrete slabs
- Water-Bound Gravel
- Lawn

LEA RIVER PARK PHASE 1	Planning Application		
	TWELVETREES CRESCENT Overview		
01.03.2010	TTC	1:250@A1	
MSCH	LRP-LEA-TTC-PA-107	rev	
Landscape Architect			
LATZ+PARTNER			
Studio 1a Highgate Business Centre 33 Greenwood Place London NW5 1LB Client: London Thames Gateway Development Corporation			
1 +44 (0)20 7482 6320 1 +44 (0)20 7485 0254 www.latzundpartner.de		 8th Floor South Quay Plaza 3 189 Marsh Wall London E14 5SH 1 +44 (0)20 7517 4730 1 +44 (0)20 7517 4778	





Fence

Staircase

Railing

Gate

Railing

Concrete slabs

Marker tree planting
NB: Alternate bridge location shown dashed

Gate

Proposed tree planting

Water-bound gravel

Concrete bercht

Retained existing concrete apron

Concrete slabs

Beacon tower

Railing with steel mesh panels

Fence

Water-bound gravel

Marker trees

Concrete slabs

Fence with climbers

Sheet pile wall with fence

Existing brick wall

Concrete retaining wall

Railing

Existing brick wall

Gap covered with steel mesh

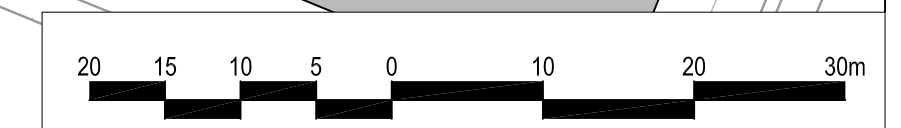
Collapsible bollards

Extend kerbline
Extend pavement to match existing
Extend railing to match existing
Demolish brick wall to street;
remove vegetation; inslate tarmac
road to match existing

Crossing markings on existing tarmac
Drop kerb

- Red line boundary
- Fatwalk Marker Tree
- Proposed Tree
- Existing Trees
- Proposed Hedges
- Concrete slabs footpath
- Benches
- Water-Bound Gravel
- Lawn
- Beacon Tower

<p>LEA RIVER PARK PHASE 1</p>	<p>LATZ+PARTNER Landscape Architects Studio 16 100 Broad Street London EC2 2RQ T: +44 (0)20 7462 8300 F: +44 (0)20 7462 8304</p>
	<p>STUDIO Architecture & Interiors Design Ground Floor Cannock Street (S1) T: +44 (0)20 7742 0000 F: +44 (0)20 7742 0010</p>
<p>Planning Application Site: POPLAR REACH Overview</p>	<p>JOHN WATKINS ASSOCIATES Landscape Architects 100 Broad Street London EC2 2RQ T: +44 (0)20 7742 0000 F: +44 (0)20 7742 0007</p>
<p>01.03.2010 PR MSCH LSP-LPR-PA-108</p>	<p>1.500QAD Skelb & Coyle LLP 2nd Floor 100 Broad Street London EC2 2RQ T: +44 (0)20 7742 0000 F: +44 (0)20 7742 0007</p>
<p>Client London Thames Gateway Development Corporation 9th Floor South Quay Plaza 3 100 Broad Street London EC2 2RQ T: +44 (0)20 7517 4770 F: +44 (0)20 7517 4770</p>	<p>Ecology Consultancy 24-25 Finsbury House London EC2A 1EJ T: +44 (0)20 7320 0007 F: +44 (0)20 7320 0088</p>





Beacon tower
planted with climbers such as Parthenocissus
quinquefolia, Clematis vitalba and Wisteria sinensis
Bird- and bat-boxes are integrated in the top

- Red line boundary
- Fatwalk Marker Tree
- Proposed Tree
- Existing Trees
- Proposed Hedges
- Concrete slabs footpath
- Benches
- Water-Bound Gravel
- Wildflower meadow
- Beacon Tower

LEA RIVER PARK PHASE 1	stage		
	Planning Application		
	title		
A13 CONNECTOR			
Overview			
01.03.2010	A13	1:250@A1	
date	area	scale	
MSCH	LRP-LEA-A13-PA-109	-	
client	drawing no.	rev	
Landscape Architect			
LATZ+PARTNER Landscape Architects			
Studio 1a Highgate Business Centre 33 Greenwood Place London NW5 1LB www.latzundpartner.de			
London Thames Gateway Development Corporation			
9th Floor South Quay Plaza 3 189 Marsh Wall London E14 9SH		1 +44 (0)20 7482 6320 1 +44 (0)20 7485 0254 1 +44 (0)20 7517 4730 1 +44 (0)20 7517 4778	

