

LEGEND

SITE	
ROAD	
PROCESS	
OCCUPANCY	
LAND SAFE GUARDED FOR CYCLE / PEDESTRIAN WAY	
APPLICATION BOUNDARY	



STUDIO E ARCHITECTS LTD

Palace Wharf, Rainville Road,
London, W6 9HN.
Tel. 020 7385 7126
Fax. 020 7381 4995

Approved:
G Stewart

Revisions:
Revision E: Gasification Island resized

Date:
30.09.09

Drawn by:
G Toon

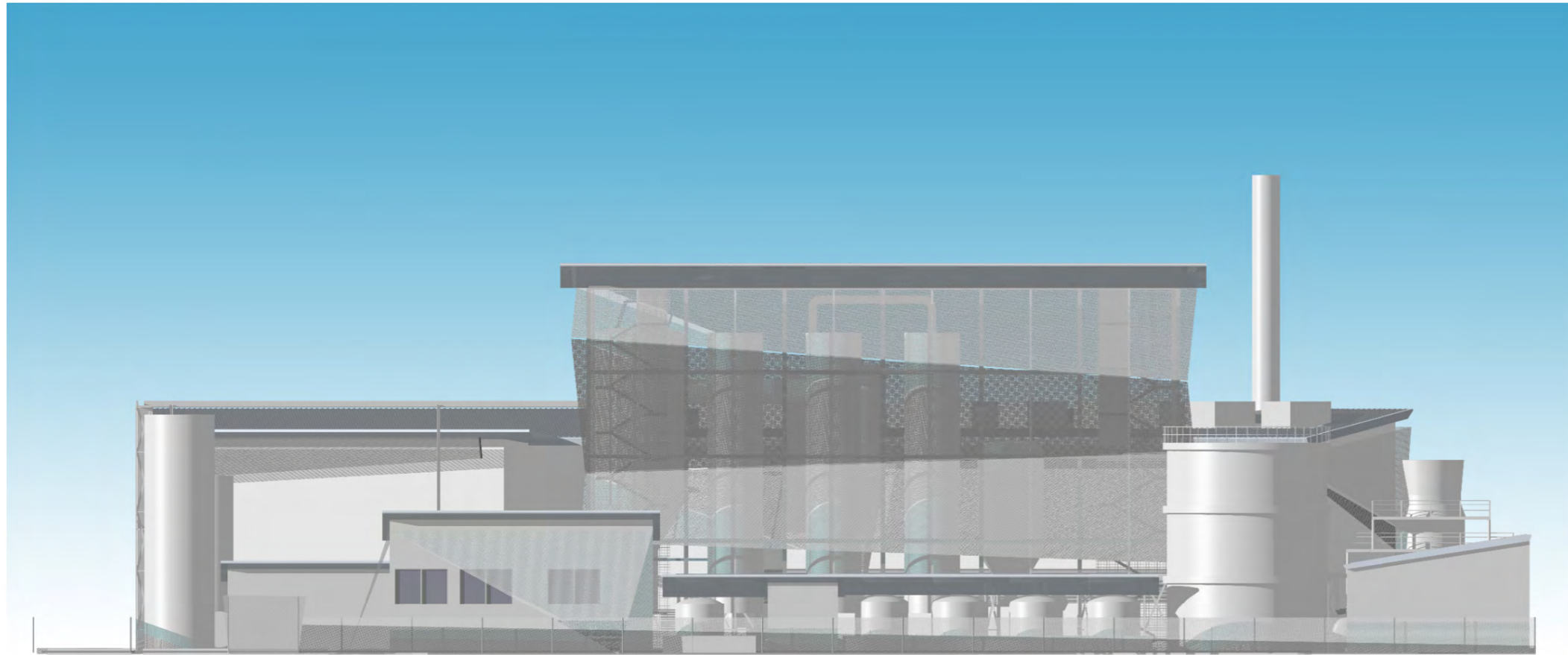
Scale:
1:600@A3

Client:
Biossence

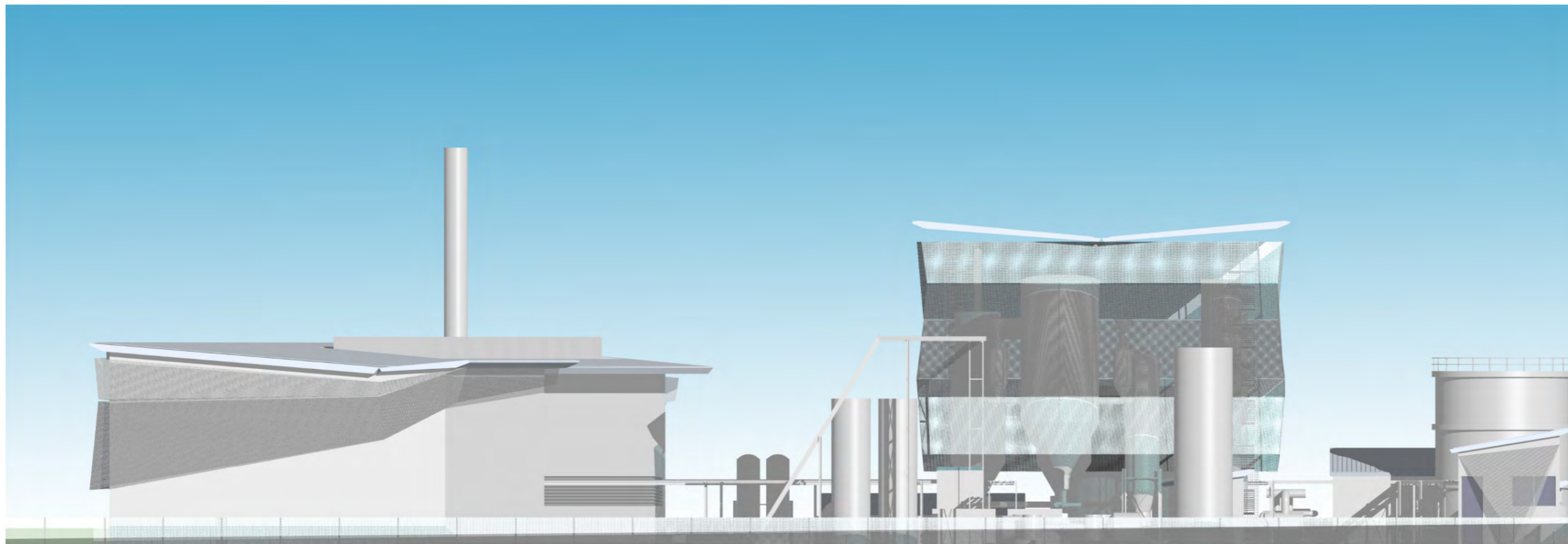
Job:
**Sustainable Energy Facility
East London**

Drawing Title:
**Plan No. 4
Site Layout and Cycle Way**

Drawing Number:
PL 010 E



NORTH ELEVATION



EAST ELEVATION



STUDIO **E** ARCHITECTS LTD

Palace Wharf, Rainville Road,
London, W6 9HN.
Tel. 020 7385 7126
Fax. 020 7381 4995

Approved:
G Stewart

Revisions:
Revision C: Layout Revised

Date:
25.09.09

Drawn by:
G Toon

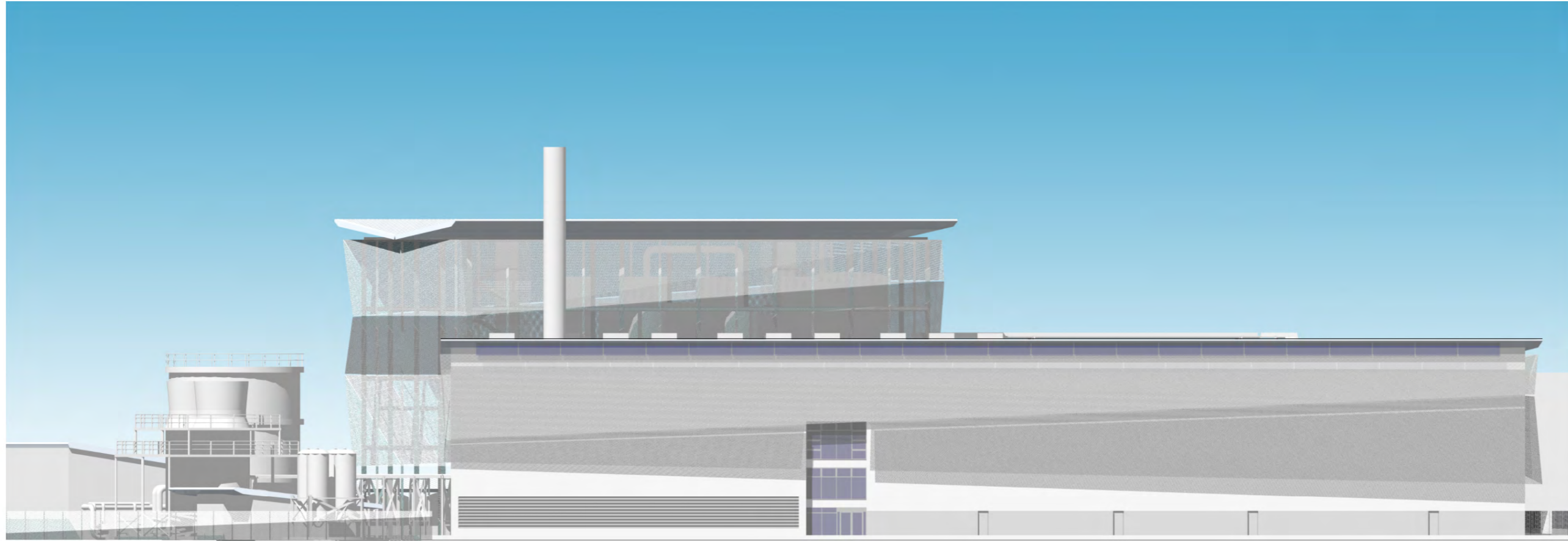
Scale:
**1 : 200 @ A1
1 : 400 @ A3**

Client:
Biossence

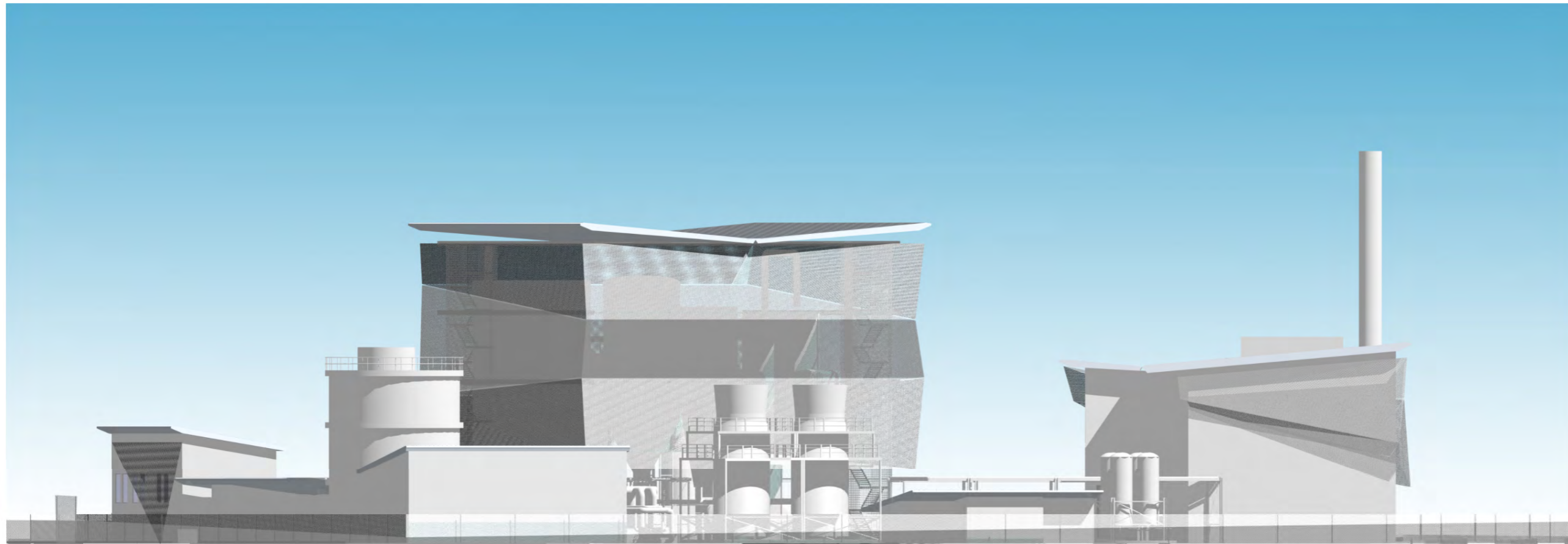
Job:
**Sustainable Energy Facility
East London**

Drawing Title:
**North Elevation
East Elevation**

Drawing Number:
PL 001 C



SOUTH ELEVATION



WEST ELEVATION



STUDIO **E** ARCHITECTS LTD

Palace Wharf, Rainville Road,
London, W6 9HN.
Tel. 020 7385 7126
Fax. 020 7381 4995

Approved:
G Stewart

Revisions:
Revision C: Layout Revised

Date:
25.09.09

Drawn by:
G Toon

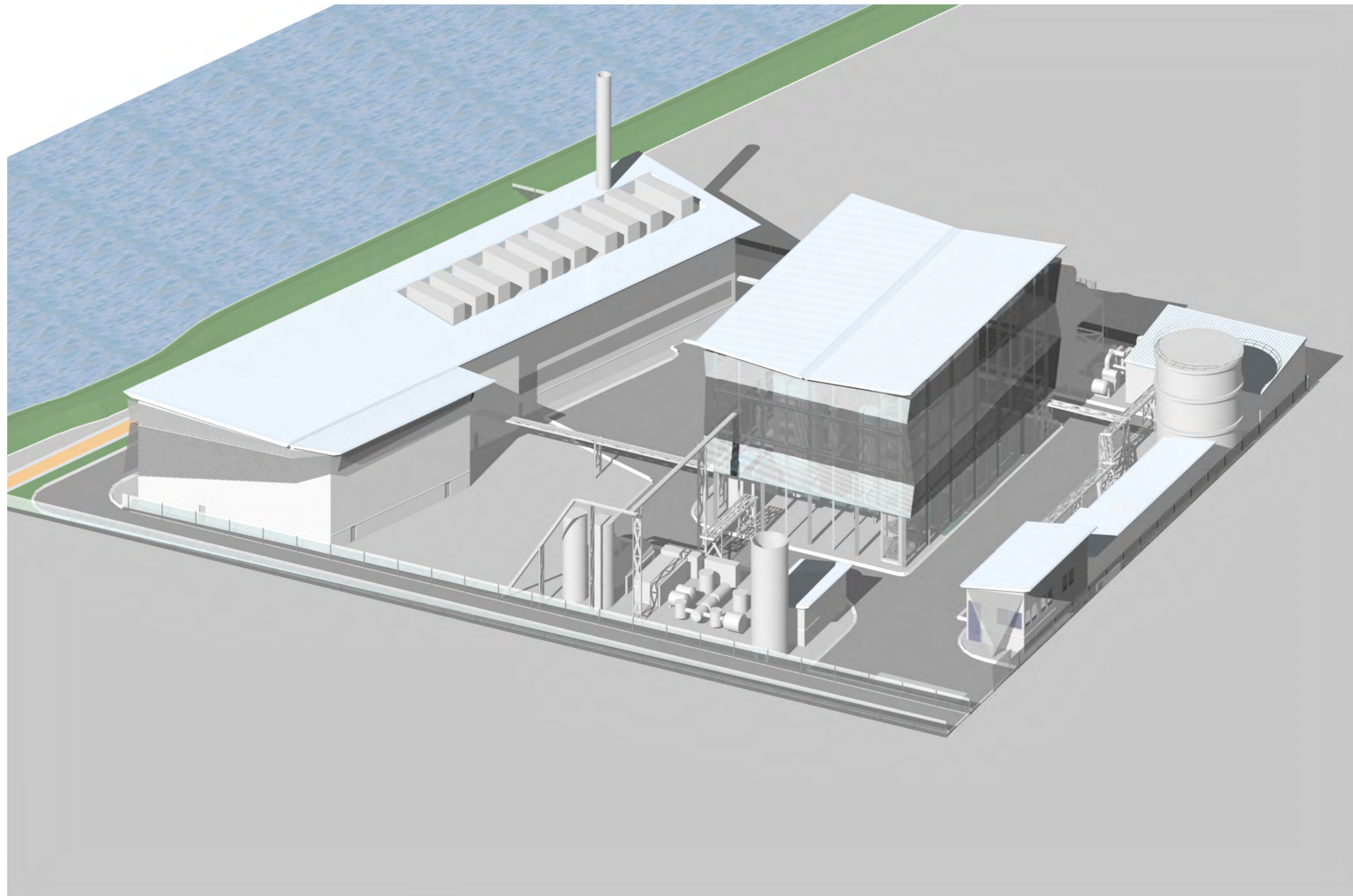
Scale:
1 : 200 @ A1
1 : 400 @ A3

Client:
Biossence

Job:
Sustainable Energy Facility
East London

Drawing Title:
South Elevation
West Elevation

Drawing Number:
PL 002 C



AERIAL FROM ENTRANCE



STUDIO **E** ARCHITECTS LTD

Palace Wharf, Rainville Road,
London, W6 9HN.
Tel. 020 7385 7126
Fax. 020 7381 4995

Approved:
G Stewart

Revisions:
Revision C: Layout Revised

Date:
25.09.09

Drawn by:
G Toon

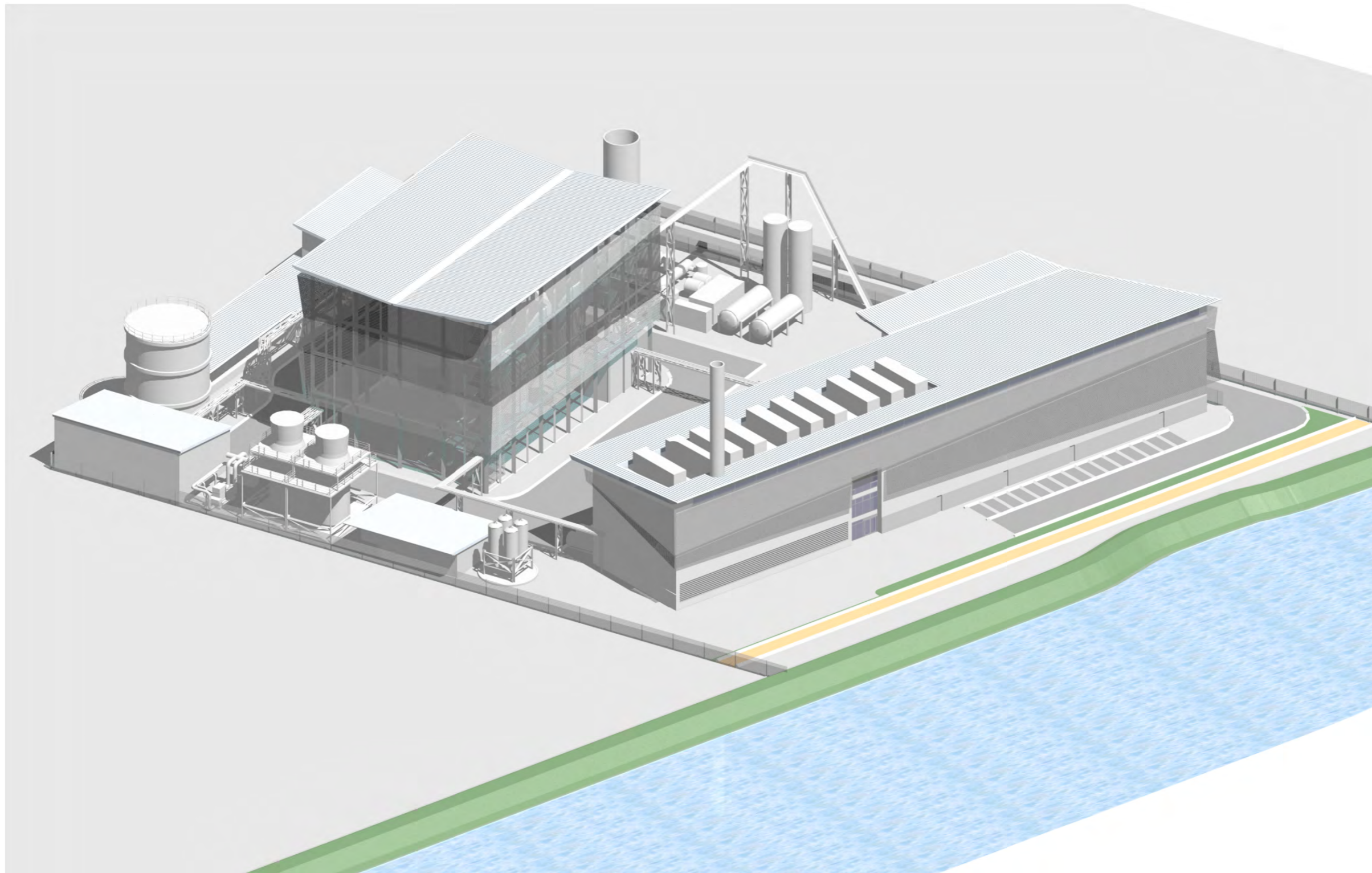
Scale:
NTS

Client:
Biossence

Job:
**Sustainable Energy Facility
East London**

Drawing Title:
**Figure 3
3D View of Proposed Facility**

Drawing Number:
PL 003 C



AERIAL FROM RIVER



STUDIO **E** ARCHITECTS LTD

Palace Wharf, Rainville Road,
London, W6 9HN.
Tel. 020 7385 7126
Fax. 020 7381 4995

Approved:
G Stewart

Revisions:
Revision C: Layout Revised

Date:
25.09.09

Drawn by:
G Toon

Scale:
NTS

Client:
Biossence

Job:
Sustainable Energy Facility
East London
Drawing Title:
Figure 4
3D View of Proposed Facility

Drawing Number:
PL 004 C