

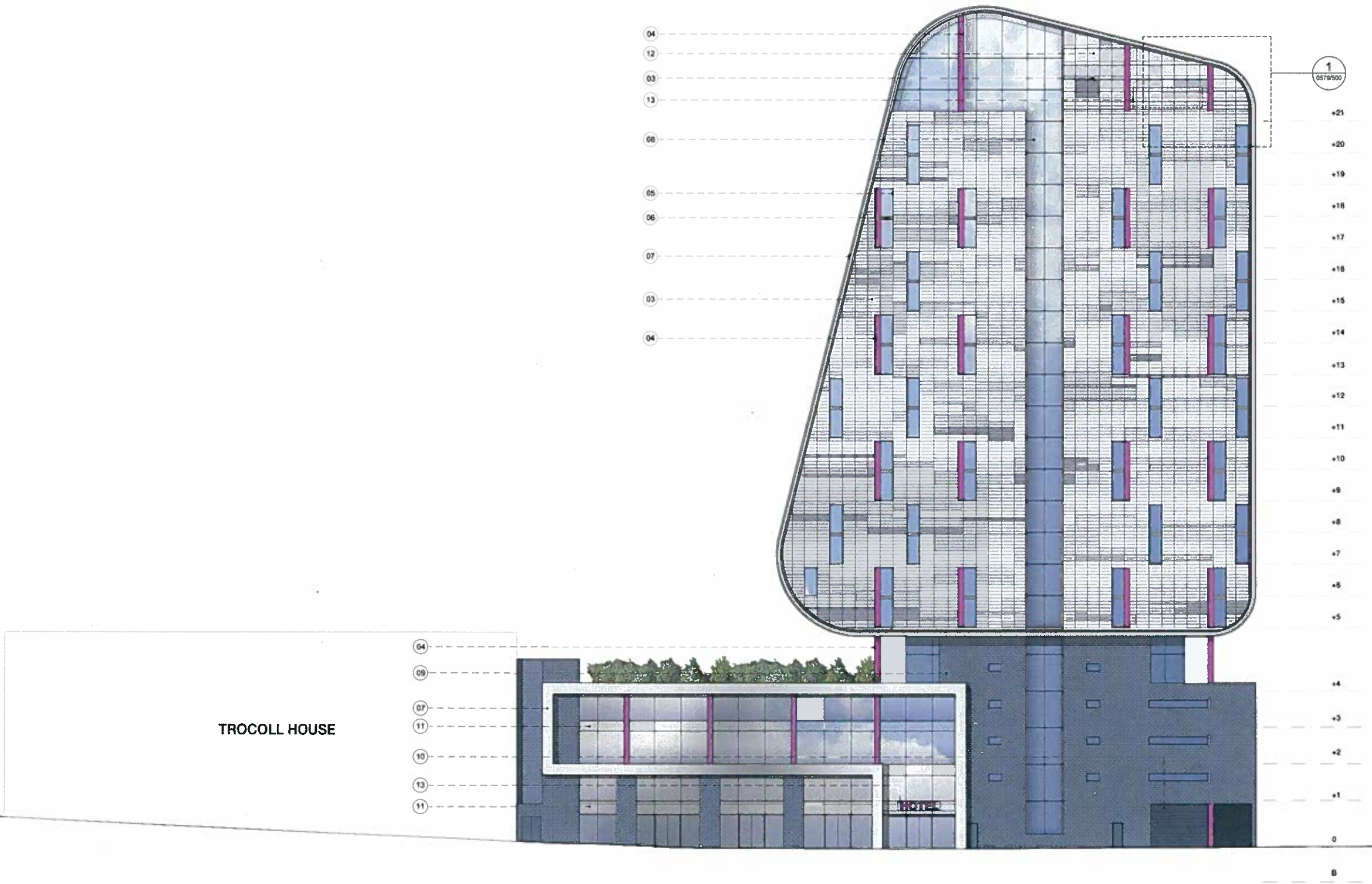
Appendix 3

Copyright. All rights reserved. This drawing must not be reproduced without permission.
 Draw the original drawing should be held open. Contractors, subcontractors and suppliers must verify all dimensions on site before commencing any work or making any shop drawings.
 All shop drawings to be submitted to the architect for approval prior to fabrication.
 This drawing is to be read in conjunction with the Architect's specifications, bills of quantities / schedules, drawings, workmanship & electrical drawings and all discrepancies are to be reported to the architect.
 Do not scale from the drawing. Dimensions are in millimetres unless otherwise stated.

NOTES

materials key

- 01 photovoltaic louvers
- 02 photovoltaic cladding system
- 03 Trespa cladding panel or similar in different shades of silver grey
- 04 powder-coated colour metal cladding
- 05 aluminium window frames
- 06 aluminium spandrel panel, colour to match window frames
- 07 silver grey metal cladding
- 08 curtain walling system
- 09 brickwork
- 10 metal roller shutter to service entrance, colour to match brickwork
- 11 back painted glass panel
- 12 perforated aluminium panel for plant ventilation, powder-coated to match colour of cladding panels
- 13 hotel signage location



TROCOLL HOUSE

North Elevation

A	Top floor facade reveal	08.07.10	SL
	Issues for planning	08.07.10	
rev	amendments	date	by

dexter moren associates
 architects urban design
 interior design creative media
 www.dextermoren.com
 dms@dextermoren.com

57d
 jamestown road
 london nw1 7db
 UK

T 020 7287 4440
 F 020 7287 8044

project
 Proposed hotel at Woking Road, Barking

client
 Coplan Estates

drawing title
 North Elevation

drawing status
PLANNING

scale	date	drawn by	checked by
1:200 @ A1	24.03.10	SL	DM
1:400 @ A3			
job no	drawing no.	revision	
0579	PL120	A	



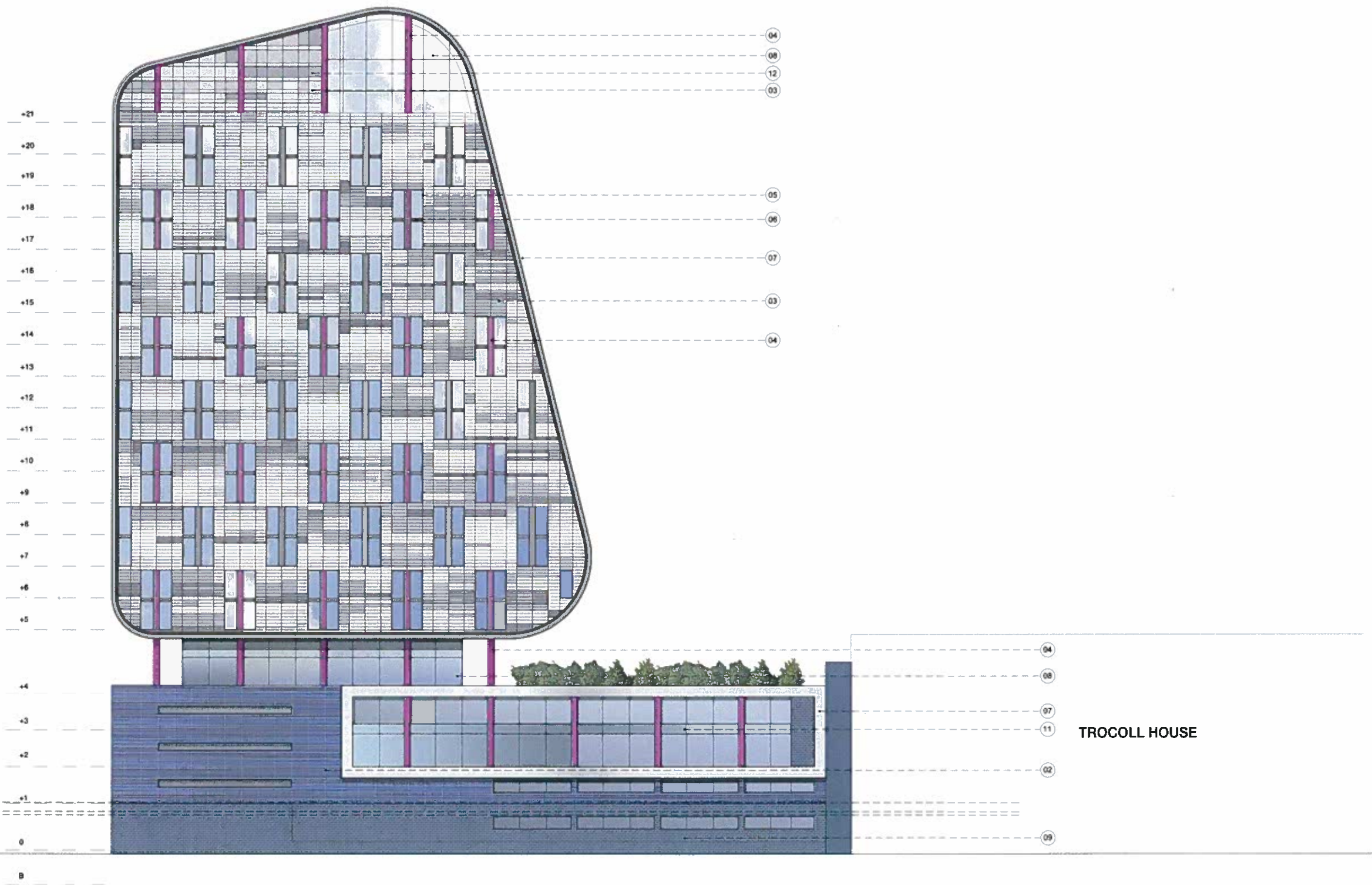
Appendix 3

Copyright: All rights reserved. This drawing must not be reproduced without permission.
 Only the original drawing should be used. Contractors, subcontractors and suppliers must verify all dimensions on site before commencing any work or issuing any shop drawings.
 All shop drawings to be submitted to the architect for comment prior to fabrication.
 This drawing is to be read in conjunction with the Architect's specification, bills of quantities, calculations, structural, mechanical & electrical drawings and all correspondence and to be referred to the architect.
 Do not scale from the drawing. Dimensions are in millimetres unless otherwise stated.

NOTES

materials key

- 01 photovoltaic louvers
- 02 photovoltaic cladding system
- 03 Trespa cladding panel or similar in different shades of silver grey
- 04 powder-coated colour metal cladding
- 05 aluminium window frames
- 06 aluminium spandrel panel, colour to match window frames
- 07 silver grey metal cladding
- 08 curtain walling system
- 09 brickwork
- 10 metal roller shutter to service entrance, colour to match brickwork
- 11 back painted glass panel
- 12 perforated aluminium panel for plant ventilation, powder-coated to match colour of cladding panels
- 13 hotel signage location



South Elevation



A	Top four floors revised issued for planning	08.07.10 08.04.10	SL
rev	amendments	date	by

**dexter
moren
associates**
 architects urban design
 interior design creative media
 www.dextermoren.com
 info@dextermoren.com

37c
 jamestown road
 london n16 7db
 UK
 t: 020 7267 4440
 f: 020 7267 6044

project
 Proposed hotel at Wakering Road, Barking

client
 Coplan Estates

drawing title
 South Elevation

drawing status
PLANNING

scale	date	drawn by	checked by
1:200 @ A1	24.03.10	SL	DM
1:400 @ A3			
job no	drawing no	revision	
0579	PL121	A	

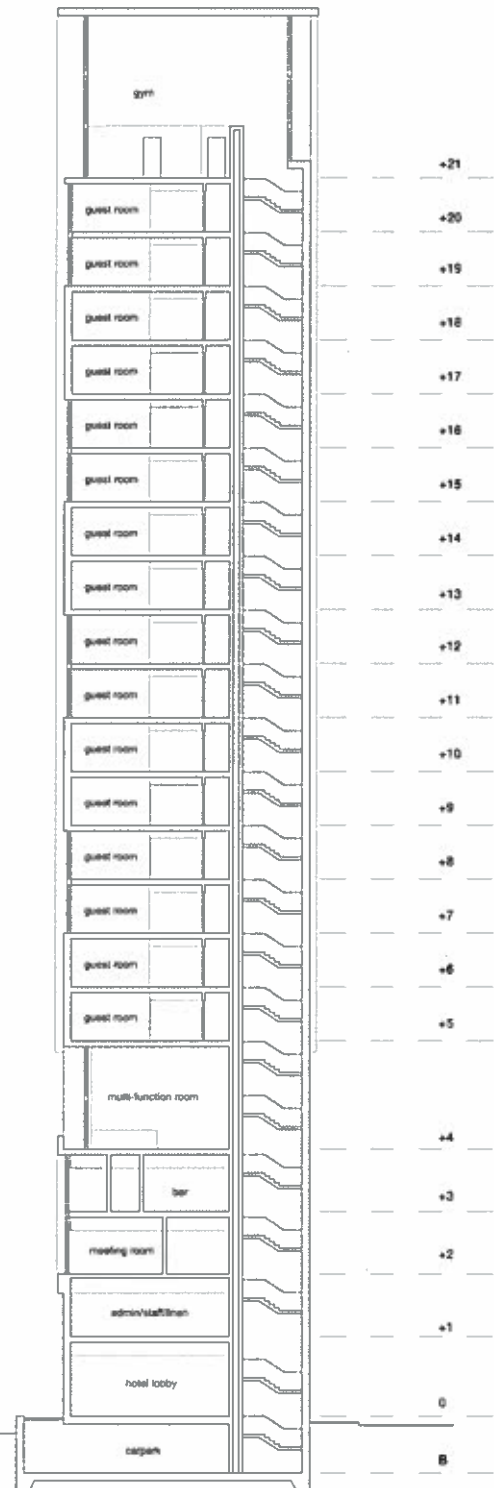
Appendix 4

Copyright: All rights reserved. This drawing must not be reproduced without permission.
 Only the original drawing should be used. Contractors, subcontractors and suppliers must verify all dimensions on site before commencing any work or making any shop drawings.
 All shop drawings to be submitted to the architect for comment prior to fabrication.
 This drawing is to be used in conjunction with the Architect's specifications, bills of quantities / schedules, structural, mechanical & electrical drawings and all discrepancies are to be reported to the architect.
 Do not scale from this drawing. Dimensions are in millimetres unless otherwise stated.

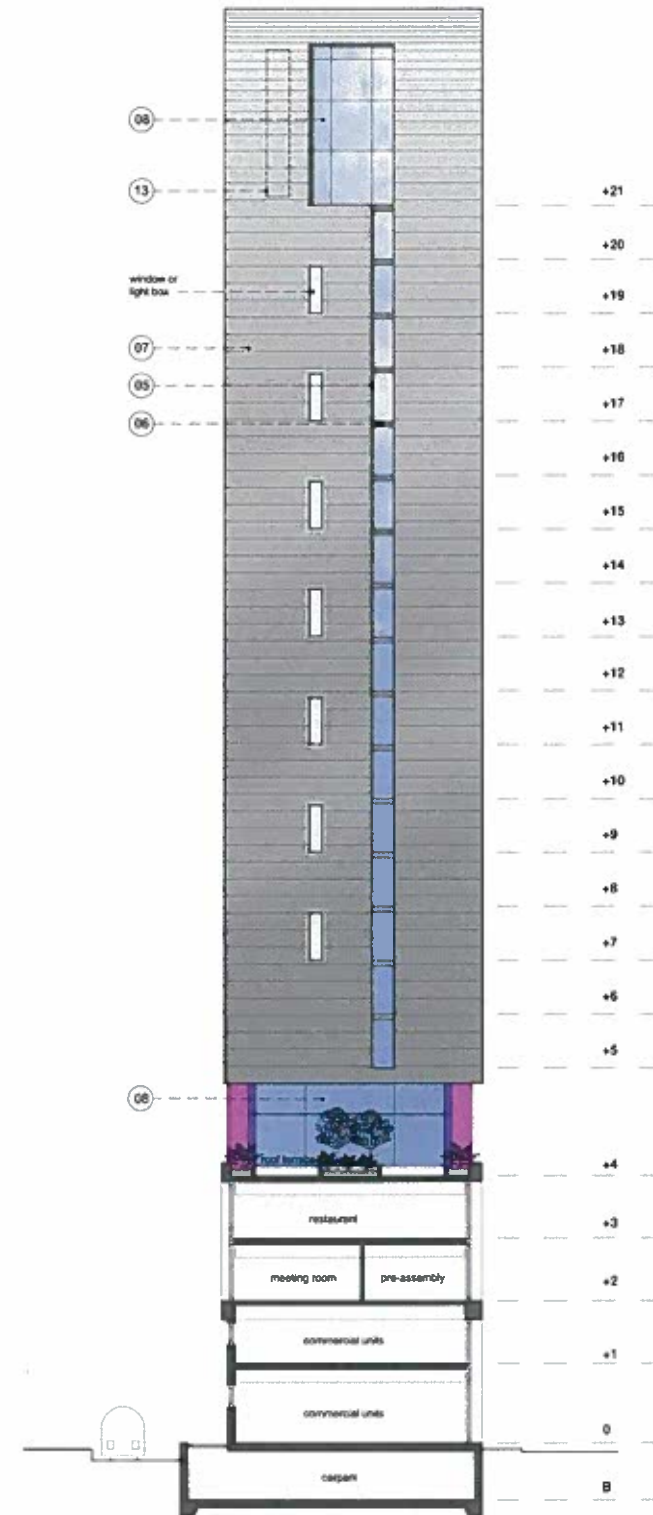
NOTES

materials key

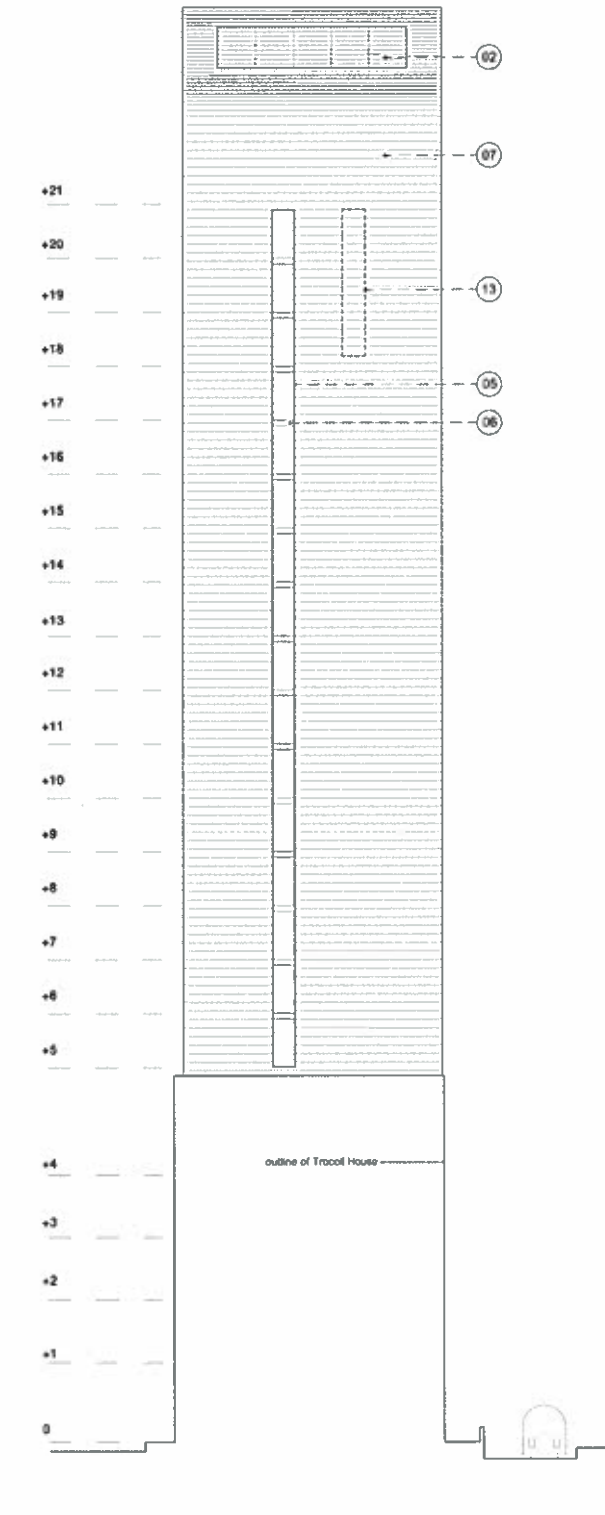
- 01 photovoltaic louvers
- 02 photovoltaic cladding system
- 03 Trespa cladding panel or similar in different shades of silver grey
- 04 powder-coated colour metal cladding
- 05 aluminium window frames
- 06 aluminium spandrel panel, colour to match window frames
- 07 silver grey metal cladding
- 08 curtain walling system
- 09 brickwork
- 10 metal roller shutter to service entrance, colour to match brickwork
- 11 back painted glass panel
- 12 perforated aluminium panel for plant ventilation, powder-coated to match colour of cladding panels
- 13 hotel signage location



Section AA



East Elevation



West Elevation

A	East elevation revised	08.07.10	SL
	layout for planning	08.04.10	
	rev amendments		DM

dexter moren associates
 architects urban design
 interior design creative studios
 www.dextermoren.com
 info@dextermoren.com

570
 jamiesdown road
 london nvr1 7db
 UK

t: 020 7267 4440
 f: 020 7267 6044

project
 Proposed hotel at Woking Road, Barking

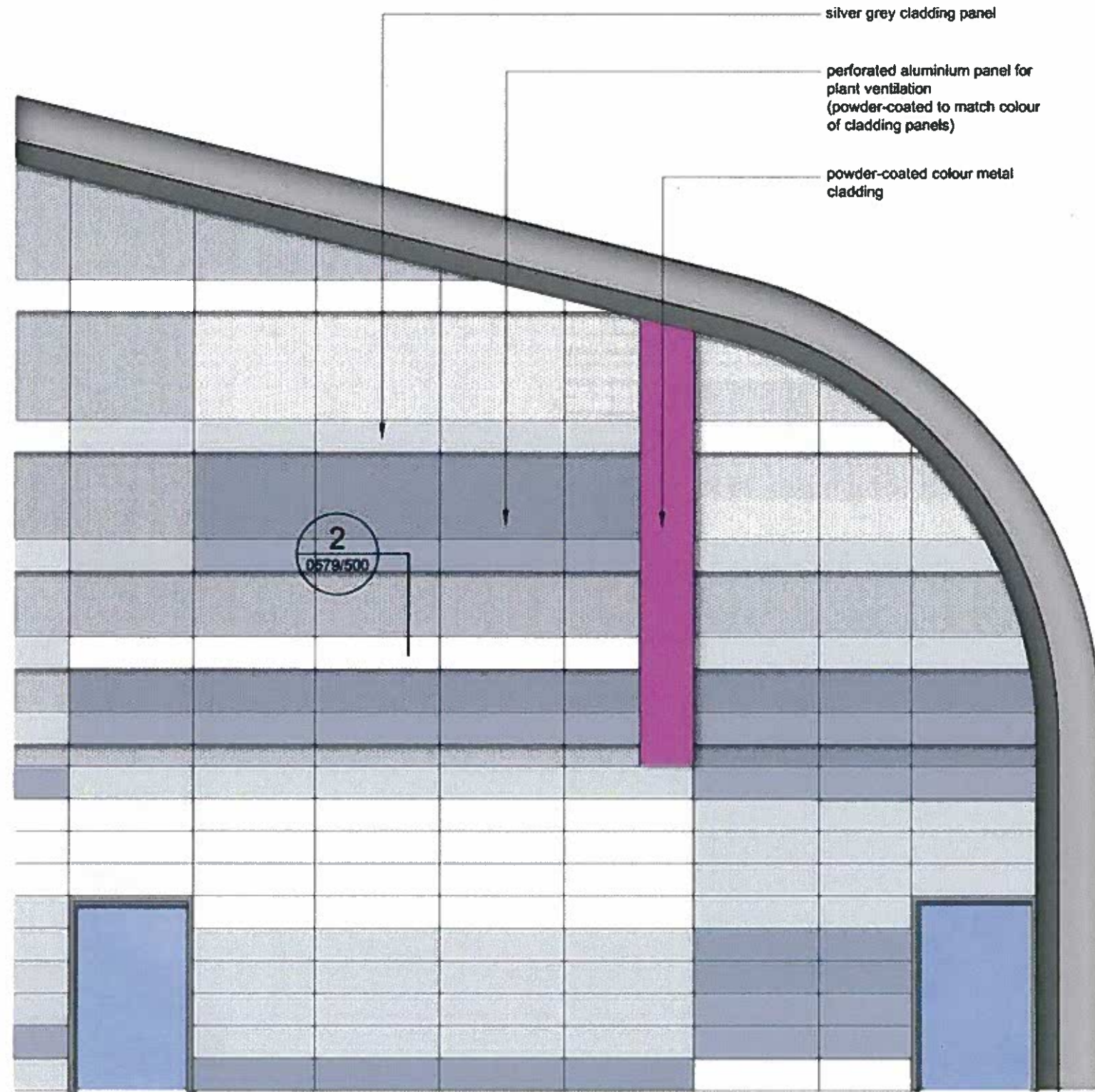
client
 Coplan Estates

drawing title
 Section AA, East Elevation & West Elevation

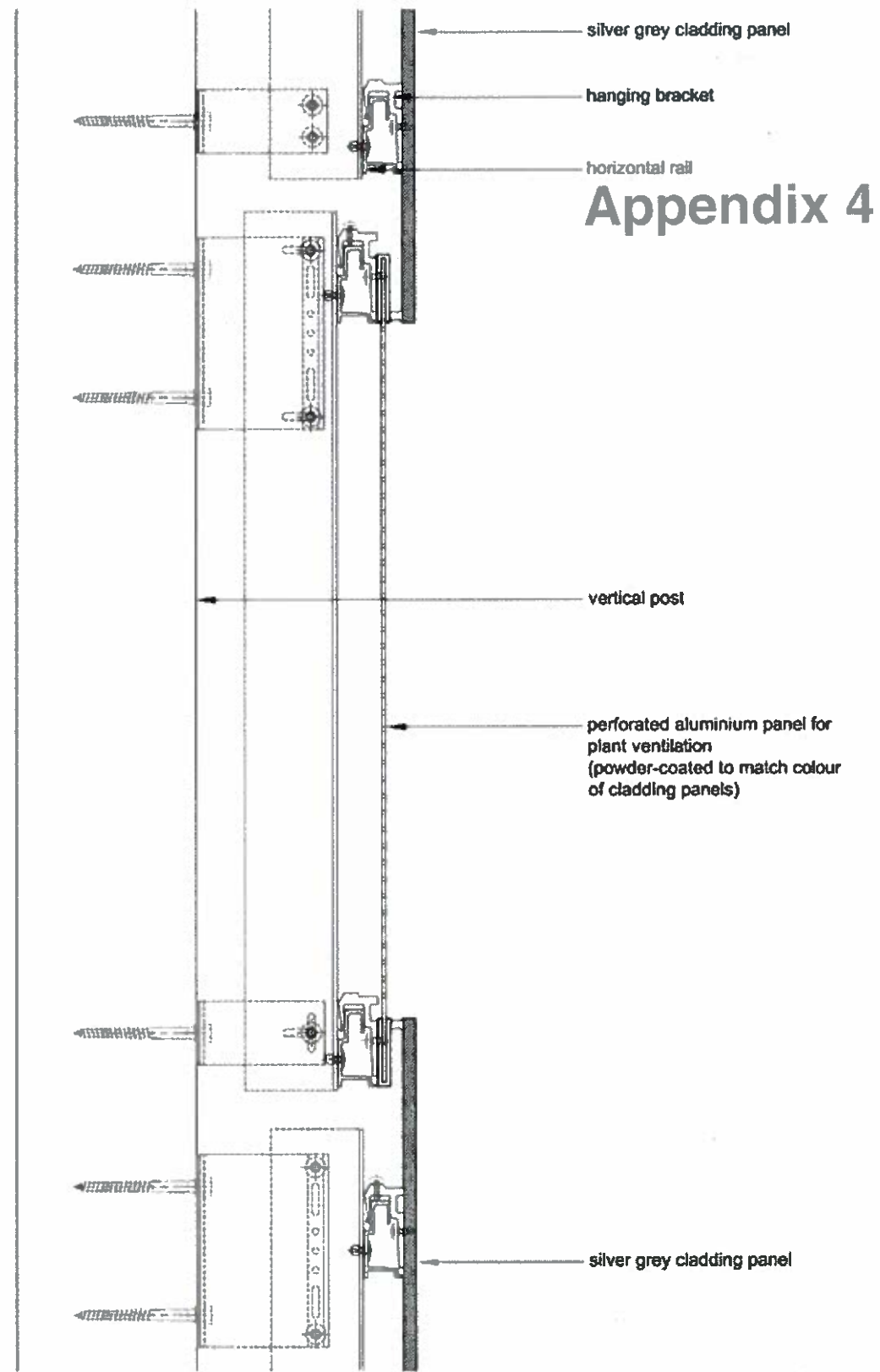
drawing status
PLANNING

scale	date	drawn by	checked by
1:200 @ A1	24.03.10	SL	DM
1:400 @ A3			
job no.	drawing no.	revision	
0579	PL122	A	





Detail 1
Scale 1:50 @A3



Detail 2
Scale 1:5 @A3

Appendix 4