

AERIAL FROM RIVER



Sustainable Energy Facility
East London

STUDIO **E** ARCHITECTS LTD

Palace Wharf, Rainville Road,
London, W6 9HN
Tel. 020 7385 7126
Fax. 020 7381 4995

Approved:
G Stewart

Revisions:

Date:
02.09.05

Drawn by:
M Diradji

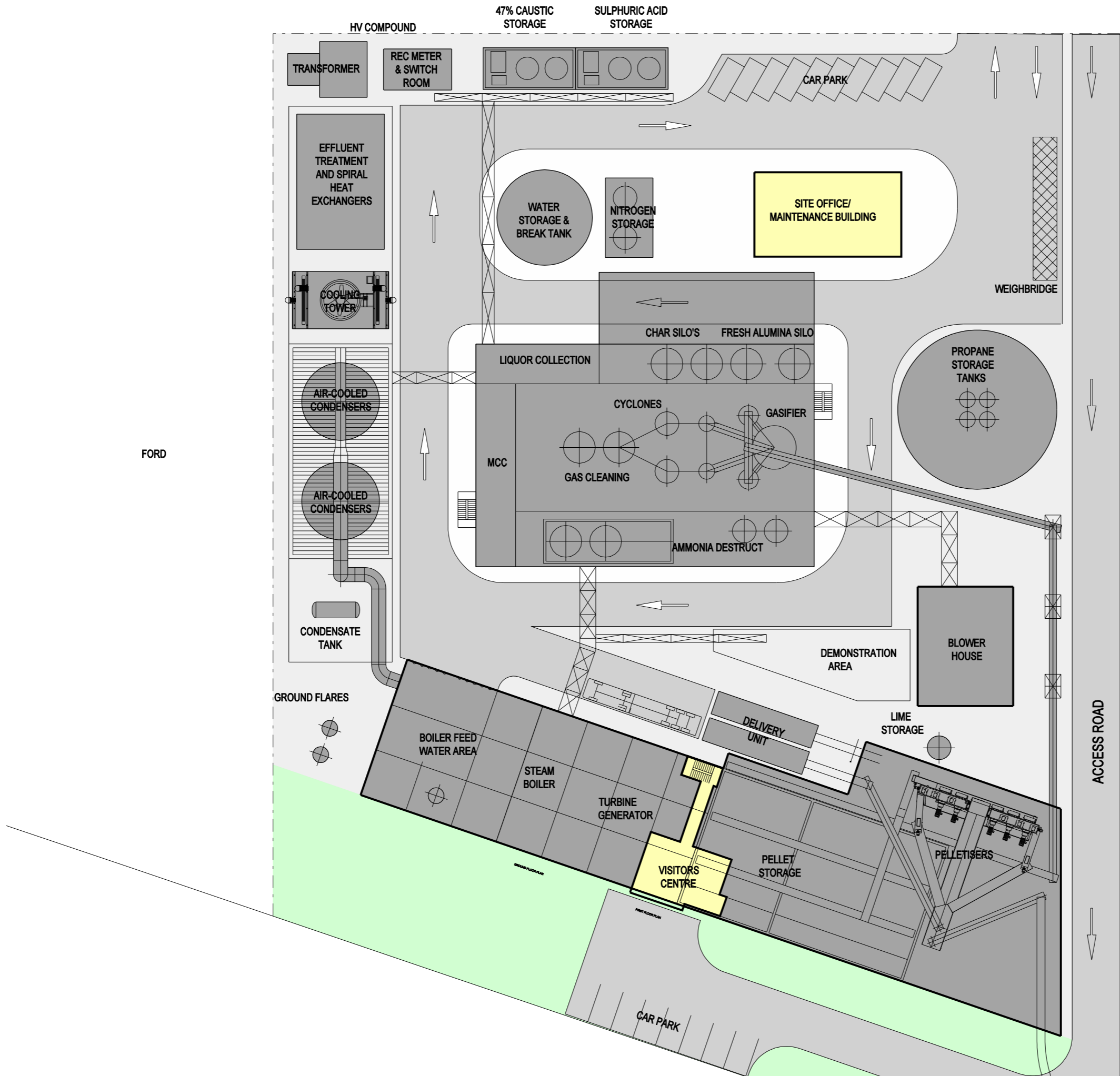
Scale:
NTS

Client:
Novera Energy

Job:
Sustainable Energy Facility
East London

Drawing Title:
Figure 4
3D View of Proposed Facility

Drawing Number:
PL 004



N

LEGEND

- SITE
- ROAD
- PROCESS
- OCCUPANCY



Sustainable Energy Facility
East London

STUDIO **E** ARCHITECTS LTD

Palace Wharf, Rainville Road,
London, W6 9HN
Tel. 020 7385 7126
Fax. 020 7381 4995

Approved:
G Stewart

Revisions:

Date:
02.09.05

Drawn by:
E Townsend

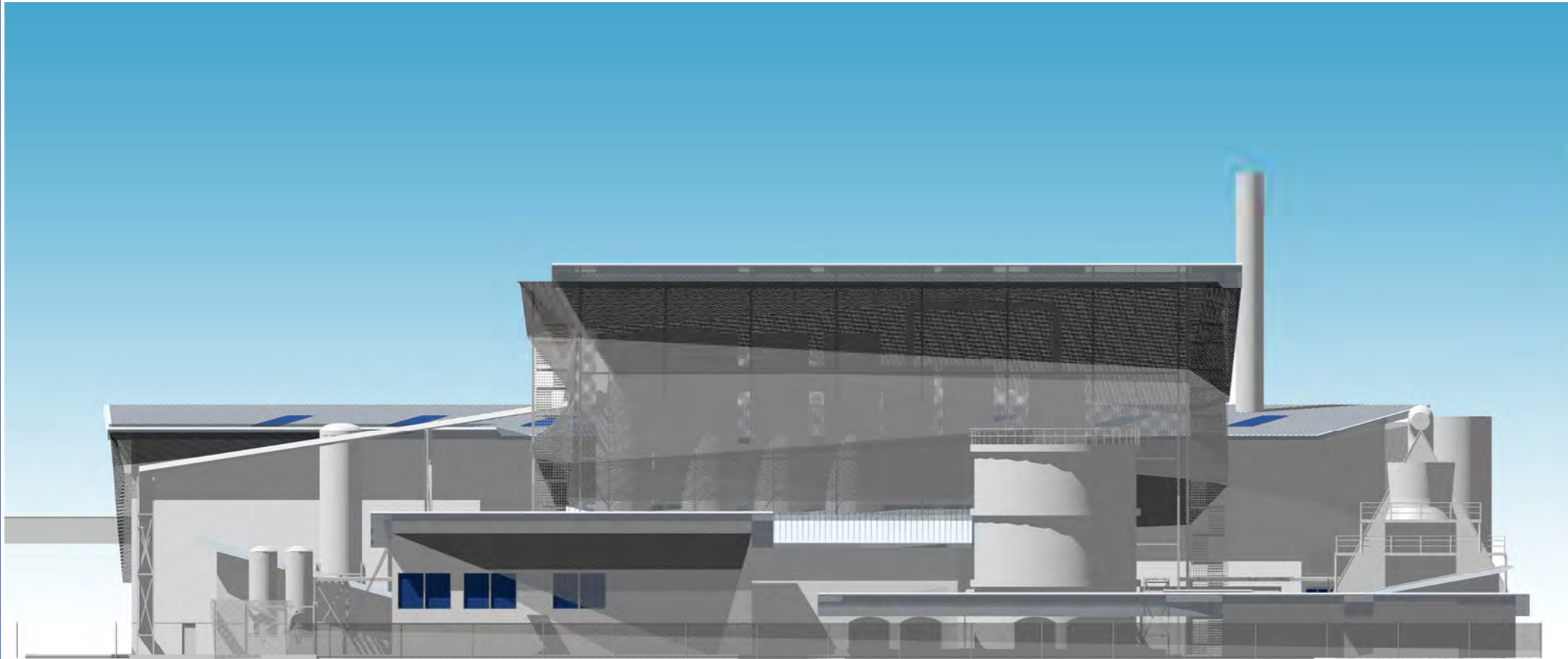
Scale:
1:500@A3

Client:
Novera Energy

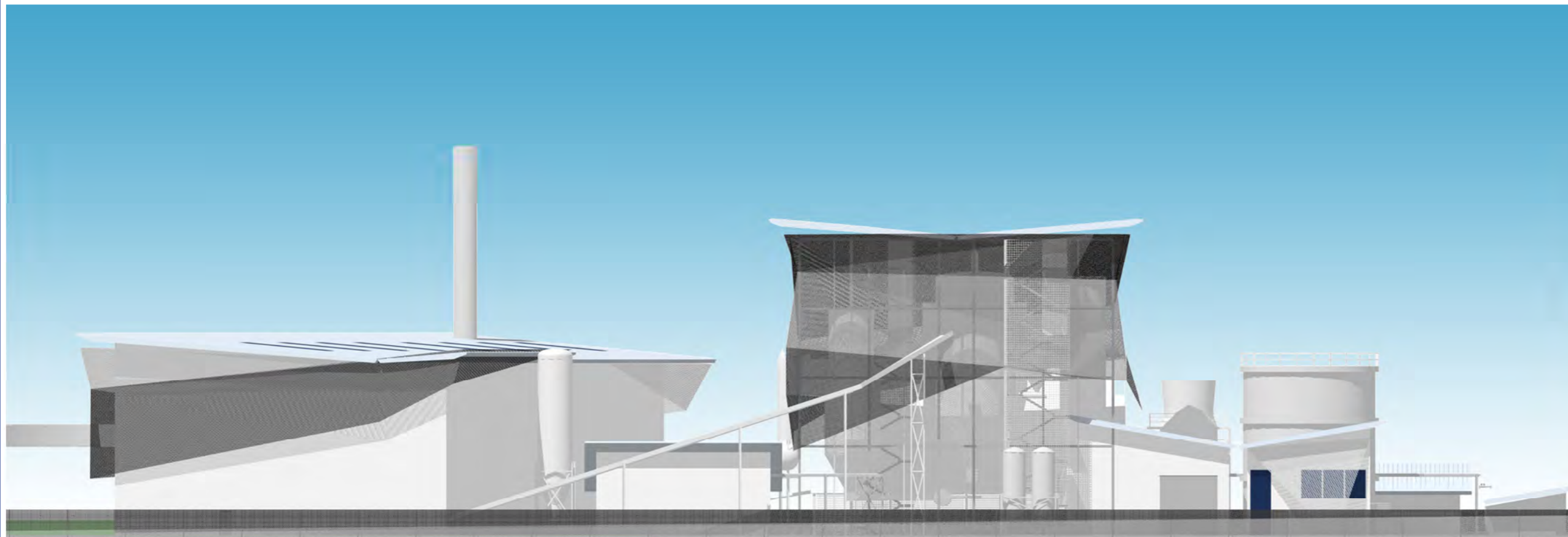
Job:
**Sustainable Energy Facility
East London**

Drawing Title:
**Figure 5.1
Site Layout**

Drawing Number:
PL 010



NORTH ELEVATION



EAST ELEVATION



STUDIO **E** ARCHITECTS LTD

Palace Wharf, Rainville Road,
London, W6 9HN
Tel. 020 7385 7126
Fax. 020 7381 4995

Approved:
G Stewart

Revisions:

Date:
02.09.05

Drawn by:
M Diradji

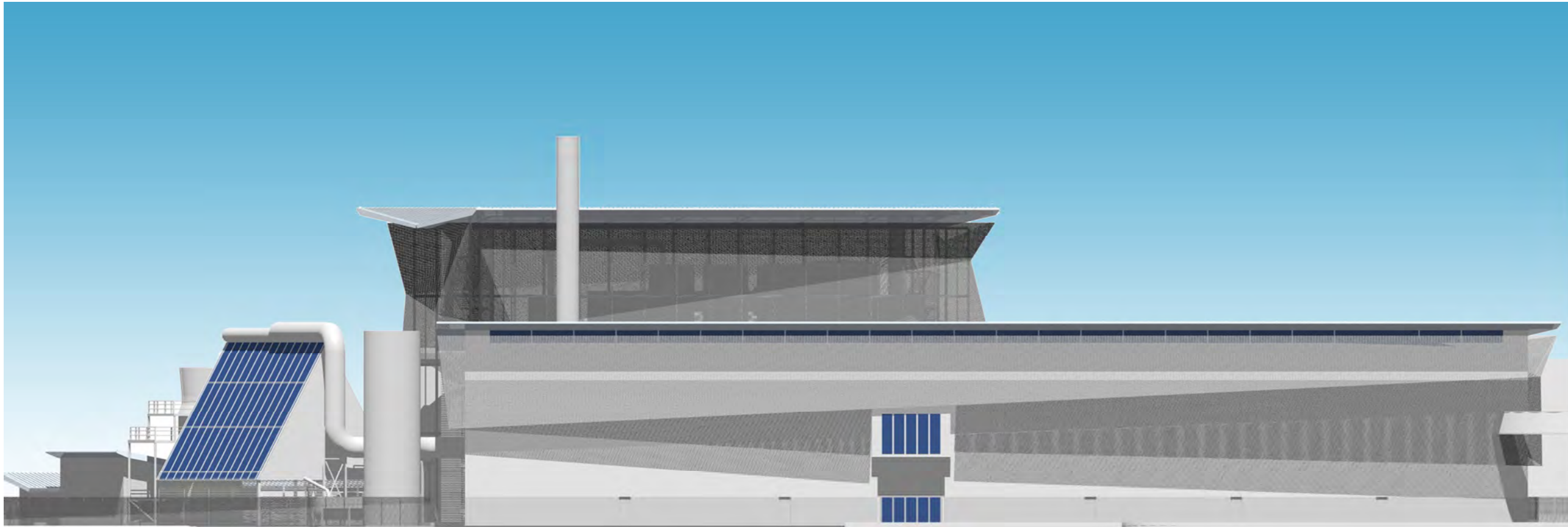
Scale:
1 : 200 @ A1
1 : 400 @ A3

Client:
Novera Energy

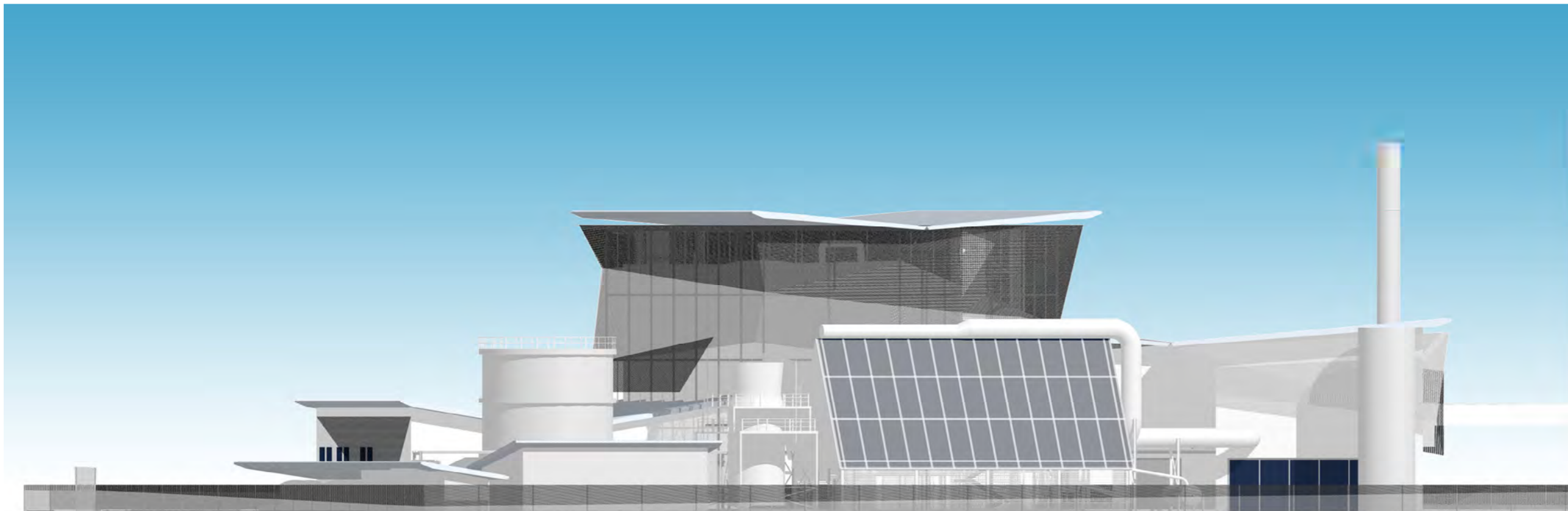
Job:
**Sustainable Energy Facility
East London**

Drawing Title:
**North Elevation
East Elevation**

Drawing Number:
PL 001



SOUTH ELEVATION



WEST ELEVATION



Sustainable Energy Facility
East London

STUDIO **E** ARCHITECTS LTD

Palace Wharf, Rainville Road,
London, W6 9HN
Tel. 020 7385 7126
Fax. 020 7381 4995

Approved:
G Stewart

Revisions:

Date:
02.09.05

Drawn by:
M Diradji

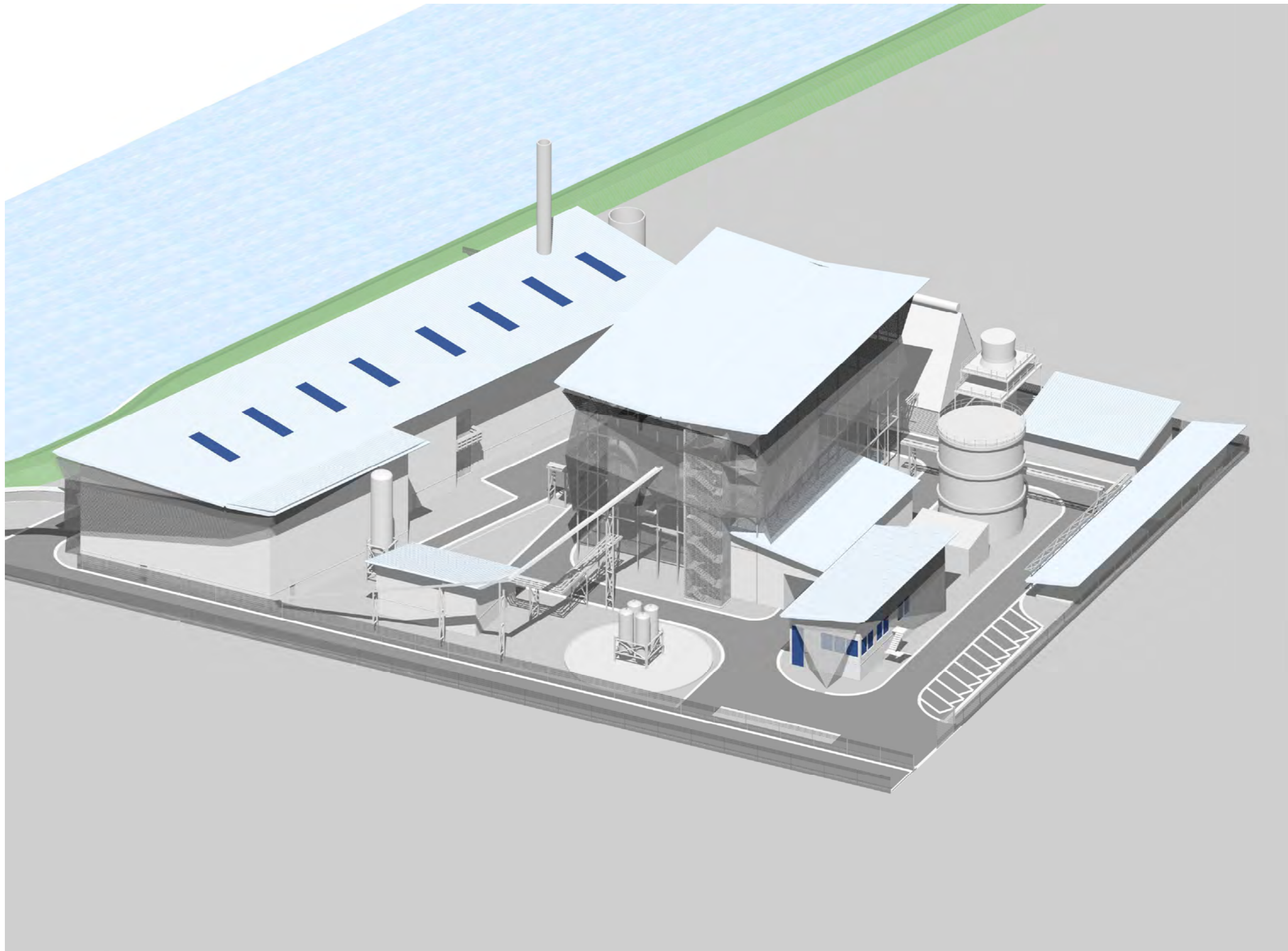
Scale:
1 : 200 @ A1
1 : 400 @ A3

Client:
Novera Energy

Job:
Sustainable Energy Facility
East London

Drawing Title:
South Elevation
West Elevation

Drawing Number:
PL 002



AERIAL FROM ENTRANCE



STUDIO **E** ARCHITECTS LTD

Palace Wharf, Rainville Road,
London, W6 9HN
Tel. 020 7385 7126
Fax. 020 7381 4995

Approved:
G Stewart

Revisions:

Date:
02.09.05

Drawn by:
M Diradji

Scale:
NTS

Client:
Novera Energy

Job:
**Sustainable Energy Facility
East London**

Drawing Title:
**Figure 3
3D View of Proposed Facility**

Drawing Number:
PL 003