



**SITE LOCATION**

REPRODUCED FROM ORDNANCE SURVEY SUPERPLAN DATA WITH THE PERMISSION OF THE CONTROLLER OF HER MAJESTY'S STATIONARY OFFICE, CROWN COPYRIGHT, LICENCE NUMBER AL50604A.

DO NOT SCALE FROM THIS DRAWING



STRATUS ENVIRONMENTAL LIMITED  
4245 PARK APPROACH  
THORPE PARK  
LEEDS  
LS15 8QB  
T: 0113 0119 2200001  
info@stratus-environmental.co.uk  
stratus-environmental.co.uk

PROJECT

**THAMES GATEWAY  
ENERGY FACILITY**

THIS INFORMATION IS CONFIDENTIAL AND THE PROPERTY OF STRATUS ENVIRONMENTAL LIMITED. IT IS RELEASED ON CONDITION THAT NONE OF THE INFORMATION SHALL BE DISCLOSED TO ANY THIRD PARTY OR REPRODUCED IN WHOLE OR PART WITHOUT THE PRIOR CONSENT IN WRITING OF STRATUS ENVIRONMENTAL LIMITED.

REV.	DESCRIPTION	DATE

DRAWN	DATE	APPROVED	DATE
SJ	04/12/2009	D.B	22/3/2010

SCALE	SHEET	DRAWING NUMBER
1:25,000	A4	CY1052/19/01

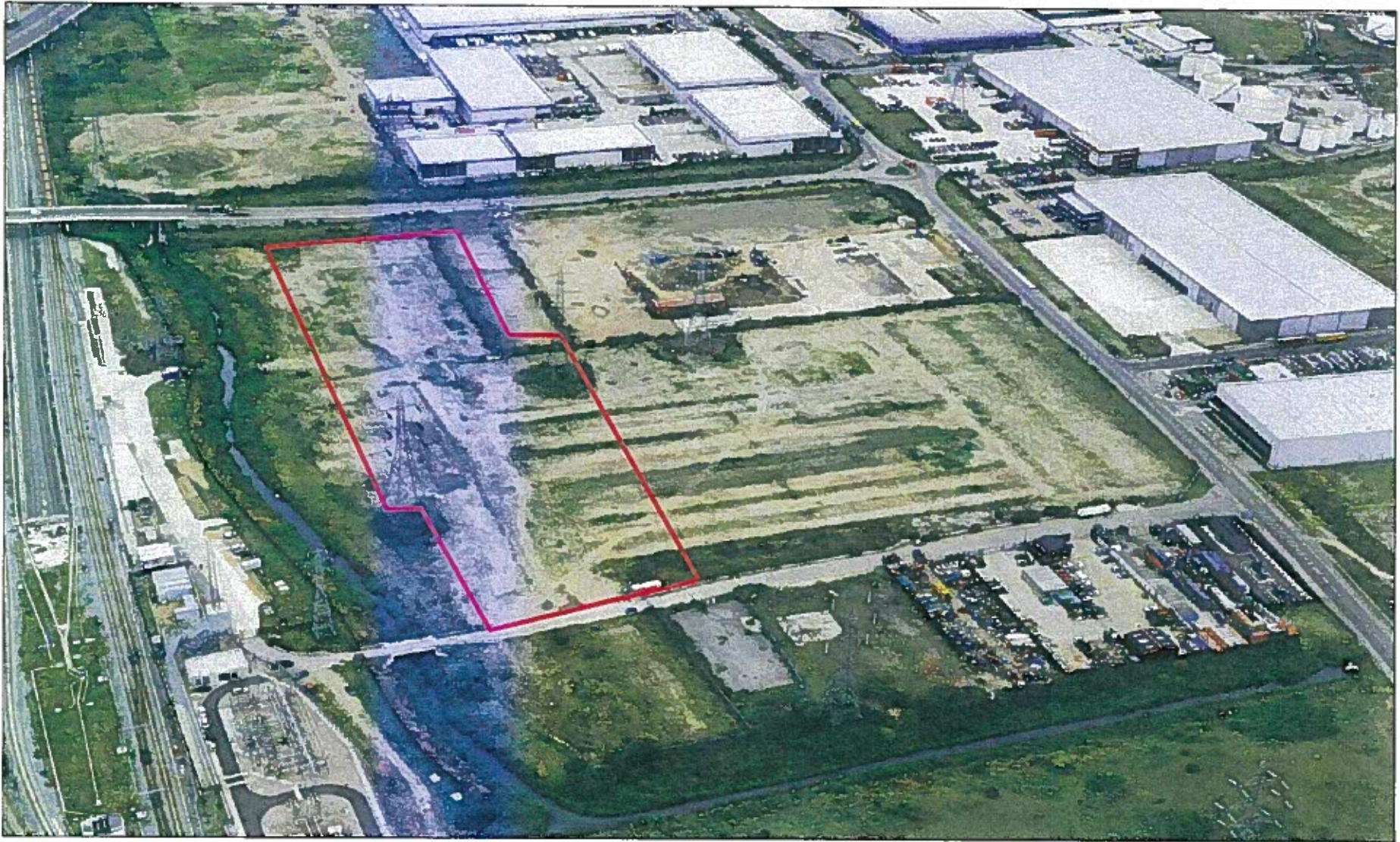
DRAWING TITLE

**LOCATION PLAN**



**Thames Gateway  
Power**

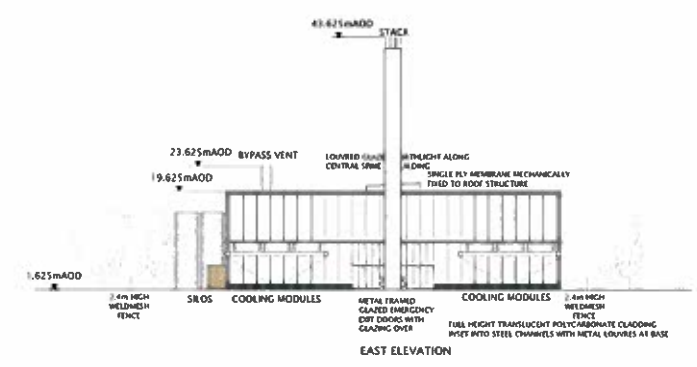
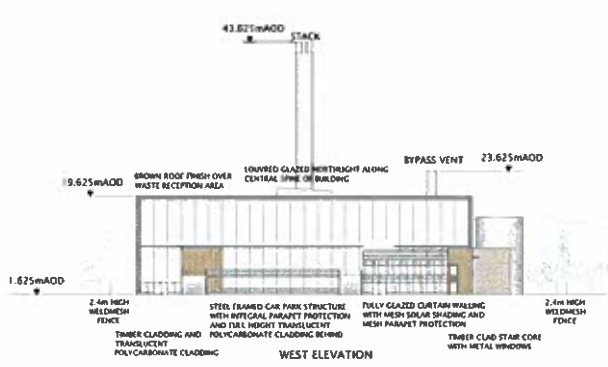
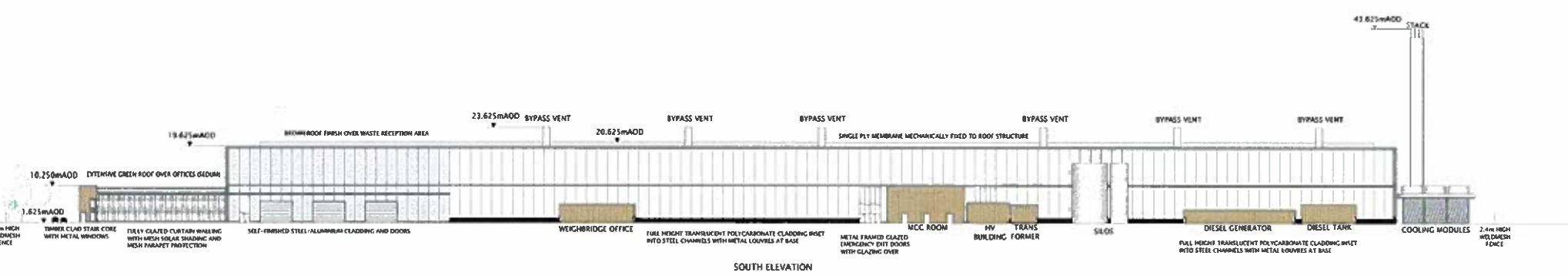
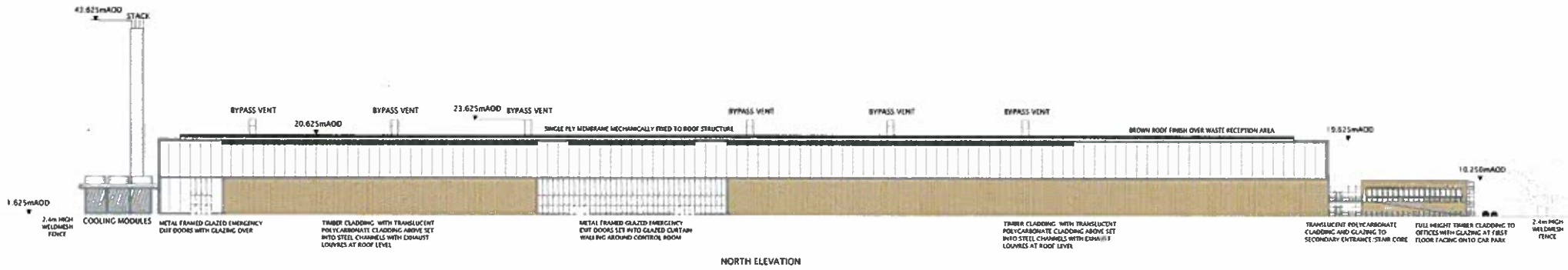
WINDFARM BUSINESS PARK, WINDSTONE LEYS, HORNWATER, MIPIC 32A



**Aerial Photograph of proposed Thames Gateway Energy Facility plot boundary**









THIS INFORMATION IS CONFIDENTIAL AND THE PROPERTY OF STRATUS ENVIRONMENTAL LIMITED. IT IS RELEASED ON CONDITION THAT NONE OF THE INFORMATION SHALL BE DISCLOSED TO ANY THIRD PARTY OR REPRODUCED IN WHOLE OR PART WITHOUT THE PRIOR CONSENT IN WRITING OF STRATUS ENVIRONMENTAL LIMITED.

**NOTES**

- DO NOT SCALE FROM THIS DRAWING.
- BASED ON LSIP BASE PLAN REFERENCE 1047K - SBa - PLOT LAYOUT V.DWG

**KEY**

- TCEP SITE BOUNDARY FENCE
- FUTURE SUSTRANS ROUTE
- PEDESTRIAN ROUTES
- CYCLE ROUTES
- CAR ROUTES
- HGV AND COMMERCIAL ROUTES
- EMERGENCY VEHICLE ACCESS

REV	DESCRIPTION	DATE

STRATUS ENVIRONMENTAL LIMITED  
 4245 PARK APPROACH  
 THORPE PARK  
 LEYS  
 LS15 8CB  
 ☎ 0113 232 8571  
 ✉ info@stratus-environmental.co.uk  
 www.stratus-environmental.co.uk

WYASTONE BUSINESS PARK  
 WYASTONE LEYS  
 WICHAMPTON  
 NP25 3SR

**THAMES GATEWAY ENERGY FACILITY**

**TRAFFIC AND PEDESTRIAN MANAGEMENT**

DATE	BY	APPROVED BY	DATE
S.T	17/12/2009	D.B	22/3/2010
SCALE	1:1000	SIZE	A2
PROJECT NUMBER	CY1052/19/13	REVISION	0

THIS INFORMATION IS CONFIDENTIAL AND THE PROPERTY OF STRATUS ENVIRONMENTAL LIMITED. IT IS RELEASED ON CONDITION THAT NONE OF THE INFORMATION SHALL BE DISCLOSED TO ANY THIRD PARTY OR REPRODUCED IN WHOLE OR PART WITHOUT THE PRIOR CONSENT IN WRITING OF STRATUS ENVIRONMENTAL LIMITED.

**NOTES**

- DO NOT SCALE FROM THIS DRAWING.
- BASED ON LSIP BASE PLAN REFERENCE 1047K - 5B4 - PLOT LAYOUT V.DWG.

**KEY**

- PROPOSED SITE BOUNDARY FENCE
- TCEP SITE BOUNDARY
- WATER TRUNK MAIN
- 8T UNDERGROUND CABLES
- HIGH VOLTAGE UNDERGROUND CABLES
- HIGH VOLTAGE OVERHEAD CABLES
- EDF HIGH VOLTAGE UNDERGROUND CABLE
- 11KV UNDERGROUND CABLES
- PRIVATE WATER MAIN
- INTERMEDIATE PRESSURE GAS MAIN
- MEDIUM PRESSURE GAS MAIN
- CHP SERVICES
- PYLON WITH REFERENCE NUMBER

REV.	DESCRIPTION	DATE



STRATUS ENVIRONMENTAL LIMITED  
 4245 PARK APPROACH  
 THORPE PARK  
 LEEDS  
 LS15 8GB  
 T: 0113 252 8571  
 E: info@stratus-environmental.co.uk  
 W: stratus-environmental.co.uk



Thames Gateway  
**Power**

WYASTONE BUSINESS PARK  
 WYASTONE LEYS  
 MOHRMOUTH  
 NP25 3SR

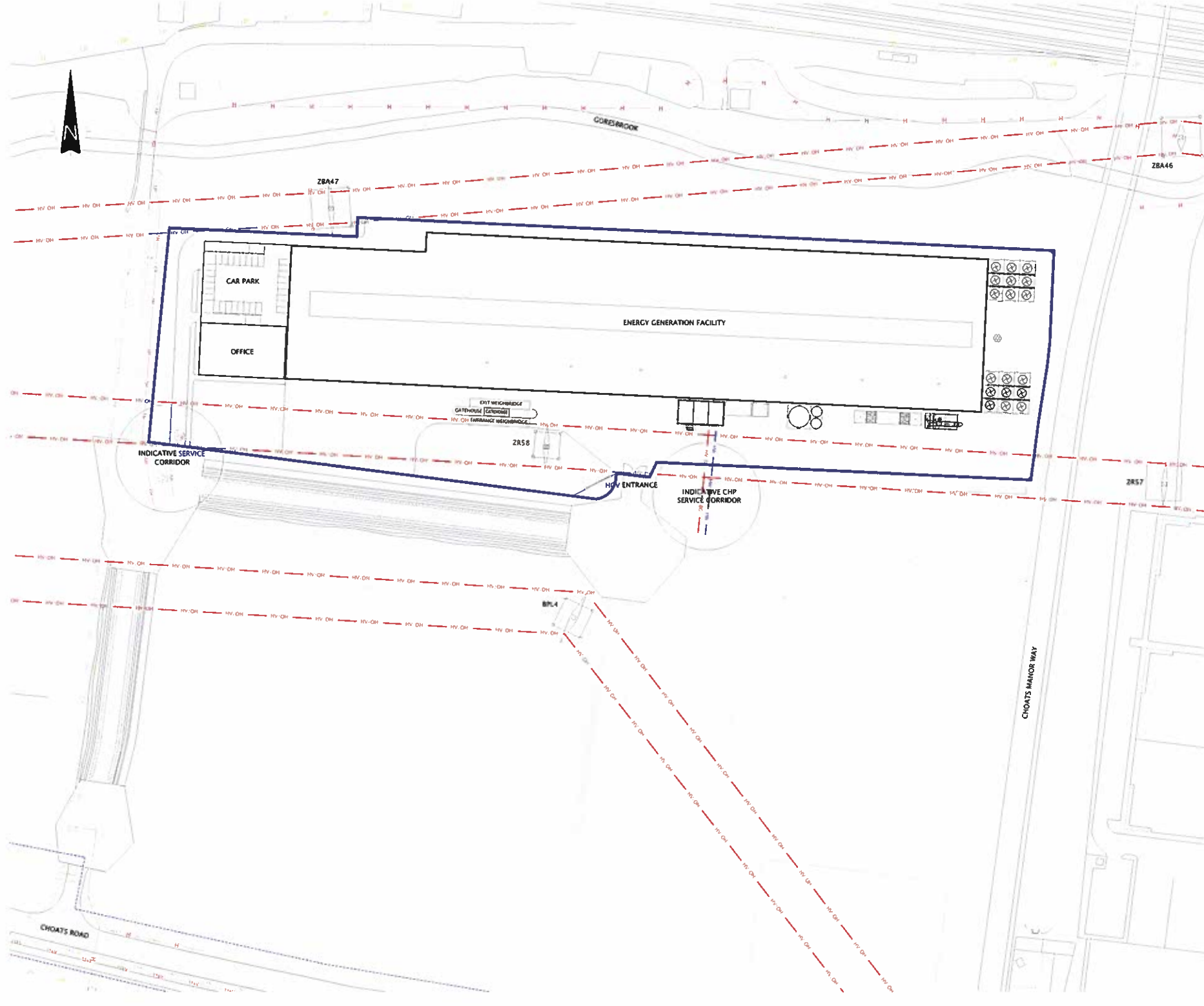
**PROJECT**

**THAMES GATEWAY ENERGY FACILITY**

**DRAWING TITLE**

**UTILITIES / SERVICES**

DATE	DATE	DATE	DATE
DATE	DATE	DATE	DATE
S.T	21/12/2009	D.B	22/3/2010
SCALE	1:1000	SHEET	A2
		DRAWING NUMBER	CY1052/19/12
		REVISION	0





**3D VISUALISATION: VIEW FROM SOUTH EAST**

NOTE: TREES ARE INDICATIVE ONLY AND NOT REPRESENTATIVE OF ACTUAL SPECIES TO BE PLANTED



**3D VISUALISATION: AERIAL VIEW**

NOTE: TREES ARE INDICATIVE ONLY AND NOT REPRESENTATIVE OF ACTUAL SPECIES TO BE PLANTED



**3D VISUALISATION: VIEW OF CAR AND PEDESTRIAN ENTRANCE**

NOTE: TREES ARE INDICATIVE ONLY AND NOT REPRESENTATIVE OF ACTUAL SPECIES TO BE PLANTED



**3D VISUALISATION: VIEW OF HGV ENTRANCE**  
NOTE: TREES REMOVED FOR CLARITY



**3D VISUALISATION: VIEW FROM NORTH EAST**

NOTE: TREES ARE INDICATIVE ONLY AND NOT REPRESENTATIVE OF ACTUAL SPECIES TO BE PLANTED



**3D VISUALISATION: VIEW FROM SOUTH EAST**

NOTE: TREES ARE INDICATIVE ONLY AND NOT REPRESENTATIVE OF ACTUAL SPECIES TO BE PLANTED