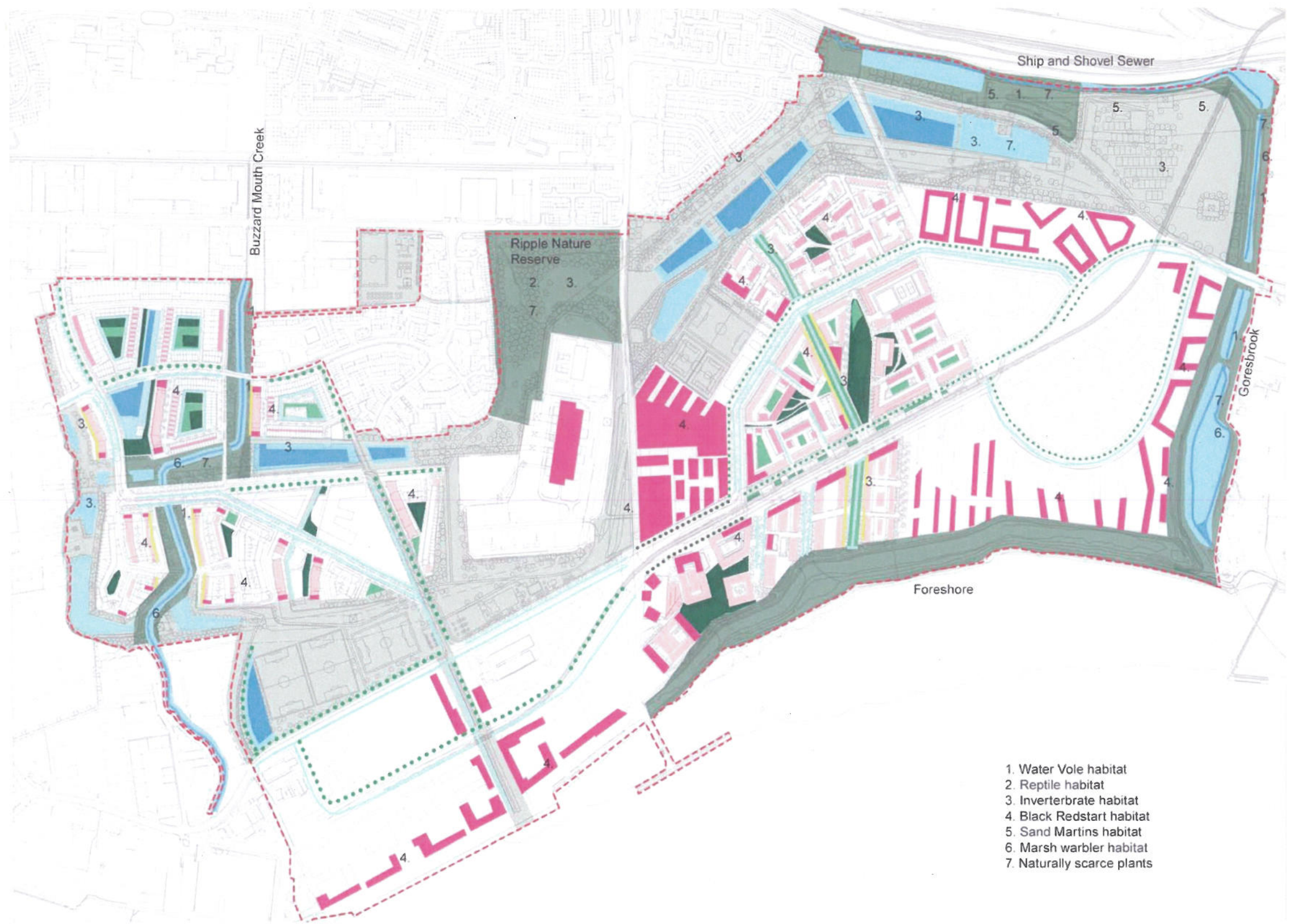
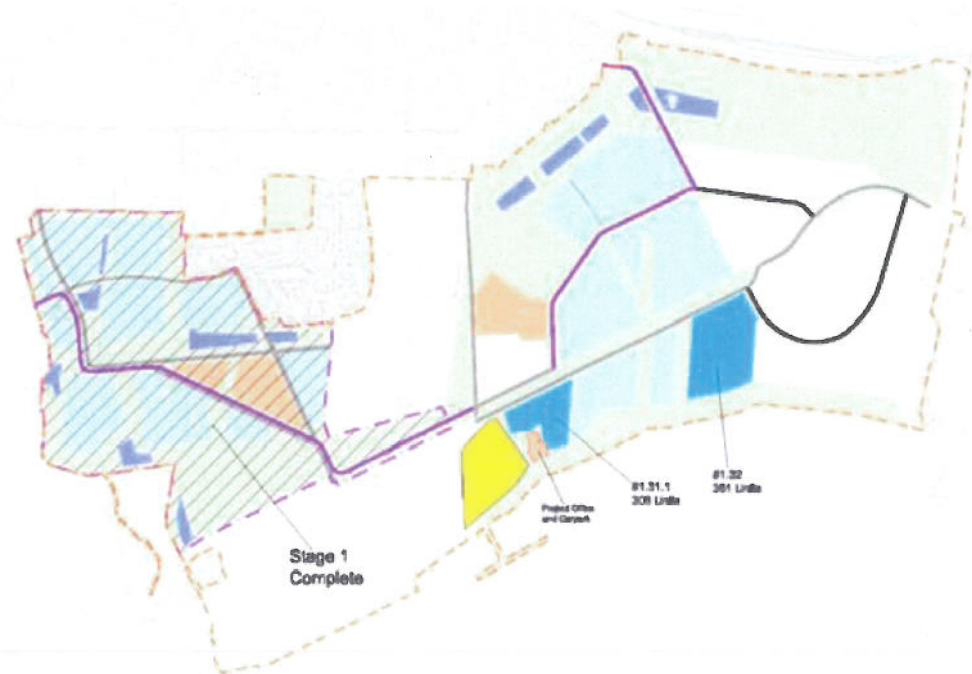


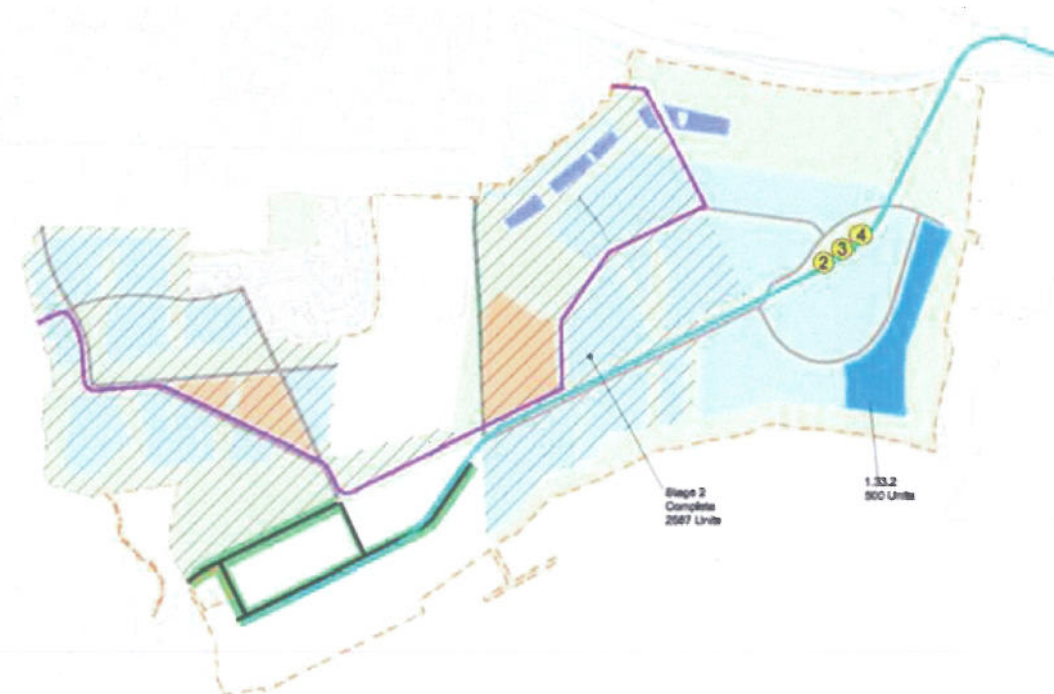
- High-level stony grassland living roof (habitat for black redstart and invertebrates)
- Low-level extensive living roof
- Mid-level semi-intensive living roof
- Permanent open water
- Temporary open water
- Structural landscape
- Designated wildlife refuge
- Urban public green space
- Raingardens
- Tree corridors
- Swales
- Existing creek
- Façades for bird and bat boxes (habitat for black redstart and invertebrates)



- 1. Water Vole habitat
- 2. Reptile habitat
- 3. Invertebrate habitat
- 4. Black Redstart habitat
- 5. Sand Martins habitat
- 6. Marsh warbler habitat
- 7. Naturally scarce plants



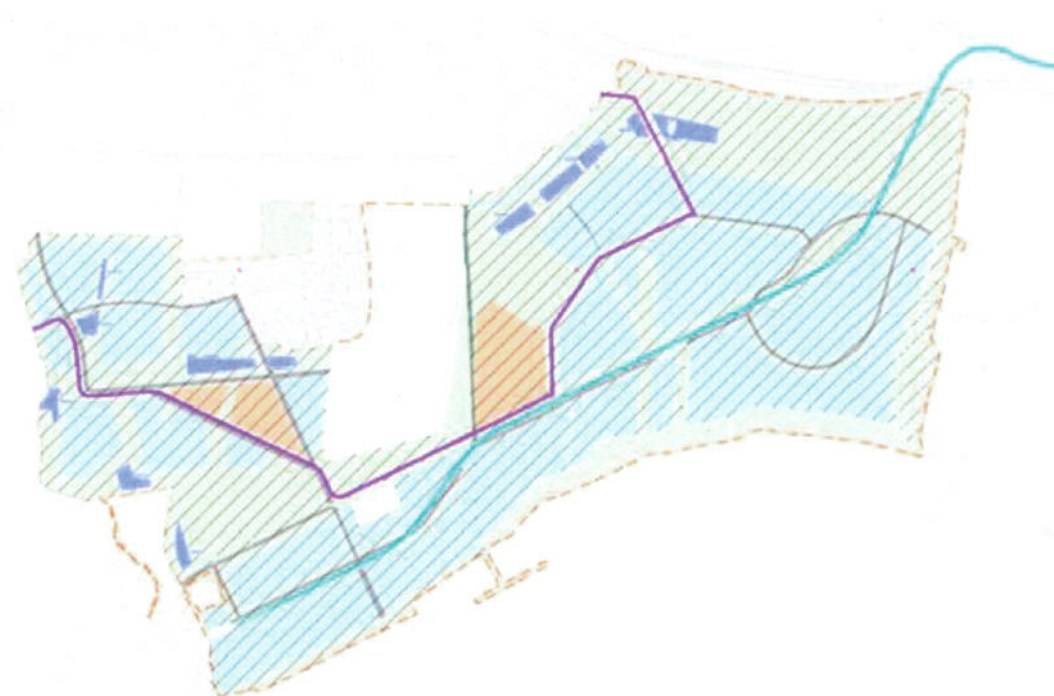
Barking Riverside phase 1 complete



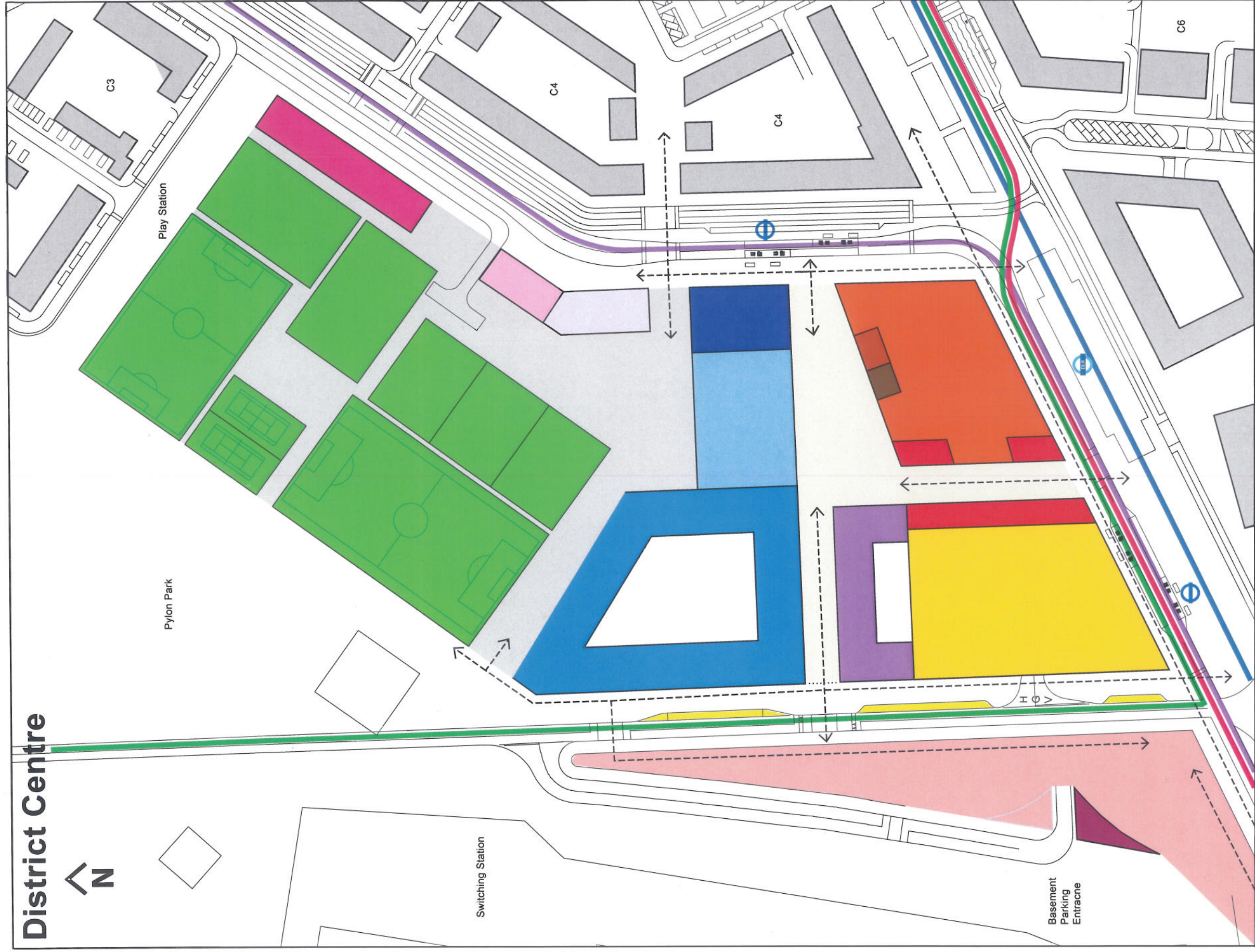
Barking Riverside phase 2 complete



Barking Riverside phase 3 complete



Barking Riverside phase 4 complete



District Centre

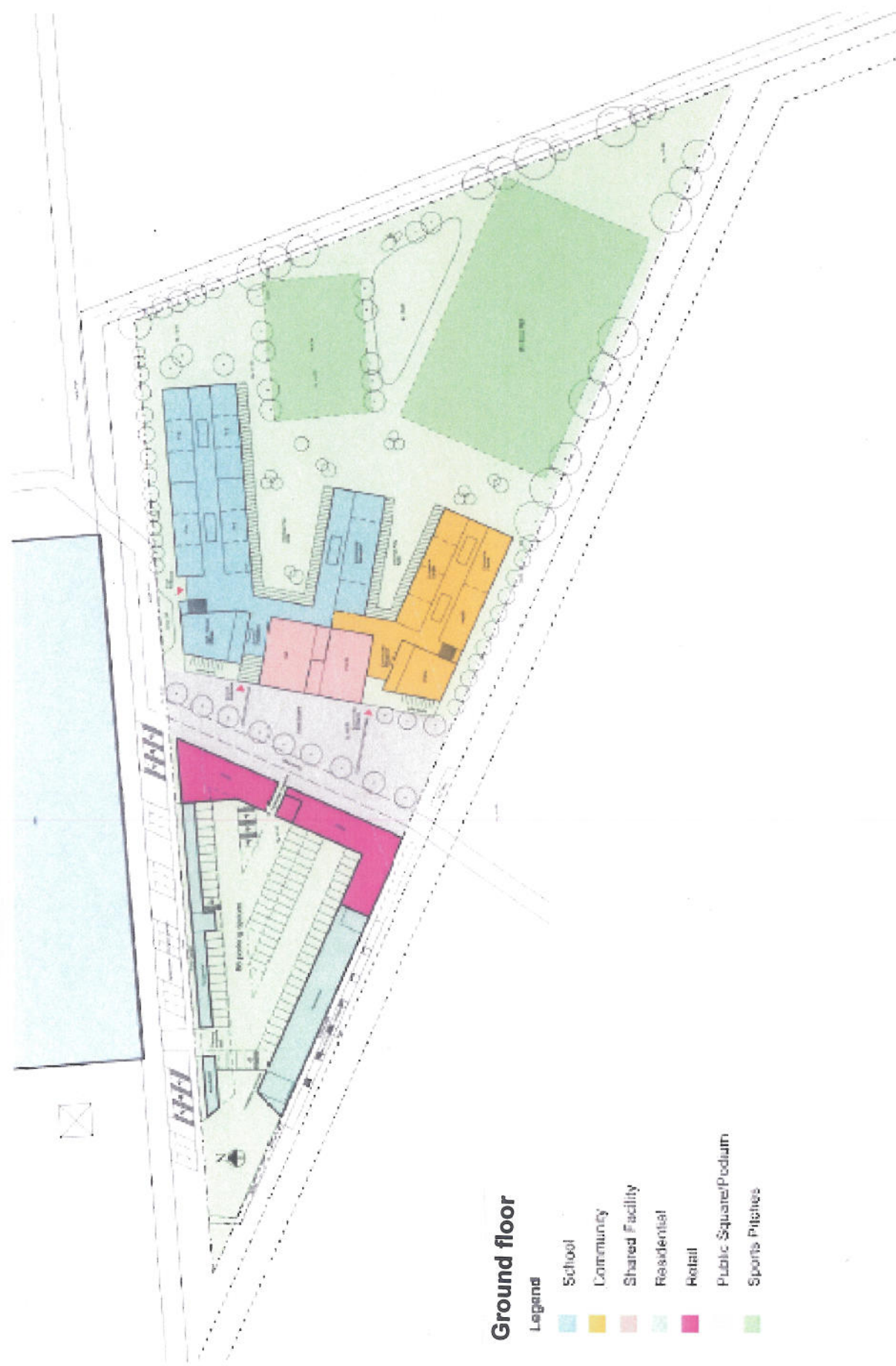
N

MaccreanorLavington

MLANL_223_P6_P00_District Centre Draft_090319_rev A.pdf

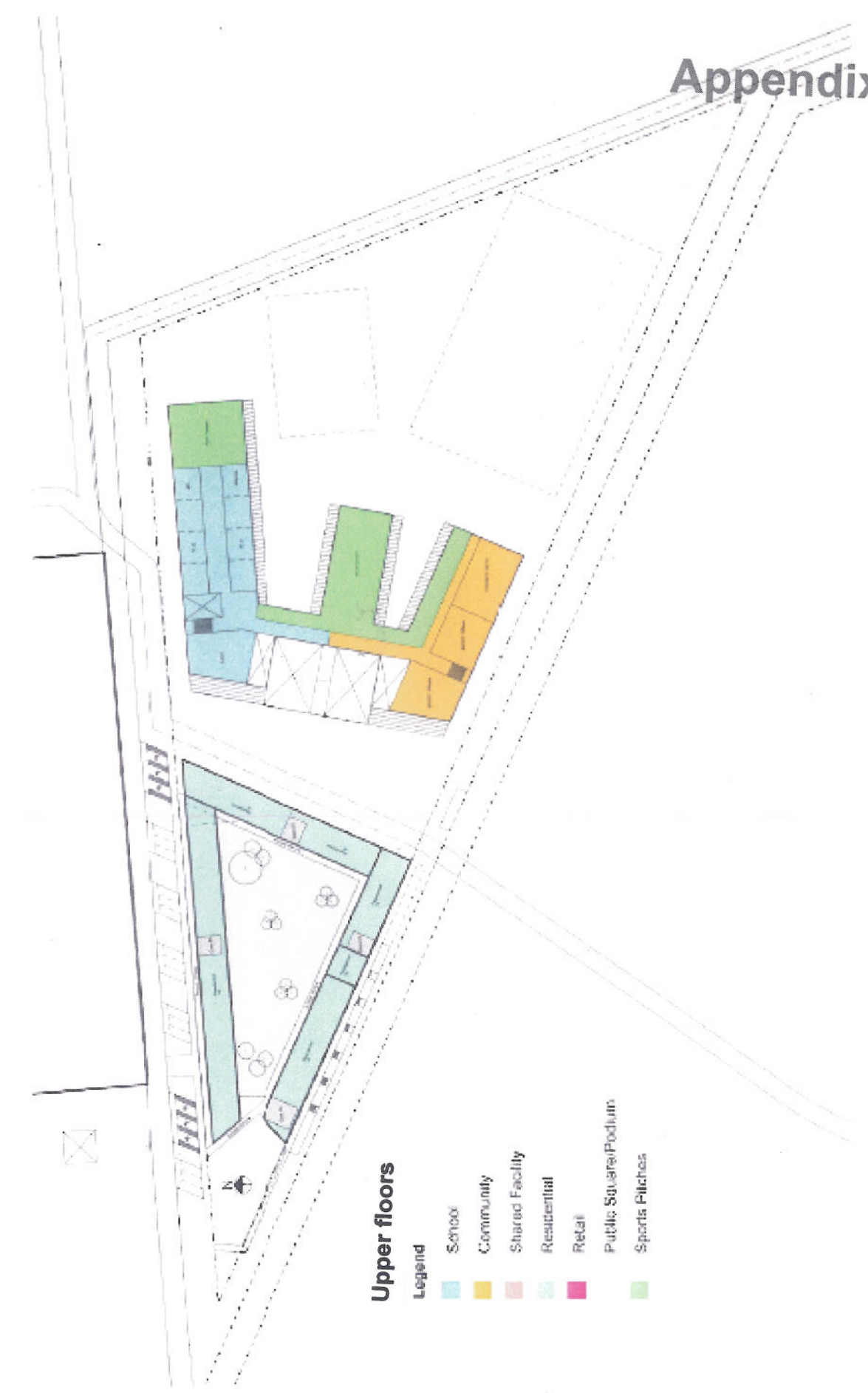
- | | | | | | | | | | |
|--|---|--|---|--|---|--|---|--|---|
| | Activity Deck | | Business and Retail Space | | Police Facility | | Community Facility Provision (Linked to Schools) & Community Arts and Theatre Space (Linked to Community) | | Leisure and Sport Facility (Phase 1) |
| | Place of Worship | | Public Toilets / Baby Change | | Community Facility Provision (Linked to Schools) & Community Arts and Theatre Space (Linked to Community) | | Childrens Centre and Nursery 1.5FE | | Community Library / ICT Learning Village |
| | Food Store (Residential Above) | | Public Toilets / Baby Change | | Community Facility Provision (Linked to Schools) & Community Arts and Theatre Space (Linked to Community) | | Childrens Centre and Nursery 1.5FE | | Leisure Centre, Swimming Pool (Residential Above) |
| | Poly Clinic | | Police Facility | | Secondary School 8FE | | Primary School 3FE | | Mixed Pitch Provision (DC) |
| | Secondary School 8FE | | Community Facility Provision (Linked to Schools) & Community Arts and Theatre Space (Linked to Community) | | Leisure and Sport Facility (Phase 1) | | Primary School 3FE | | |
| | Leisure and Sport Facility (Phase 1) | | Childrens Centre and Nursery 1.5FE | | Community Library / ICT Learning Village | | Primary School 3FE | | |
| | Community Library / ICT Learning Village | | Mixed Pitch Provision (DC) | | | | Primary School 3FE | | |
| | Leisure Centre, Swimming Pool (Residential Above) | | | | | | Primary School 3FE | | |
-
- | | | | | | |
|--|---------------------------------|--|---------------------------------|--|------------------|
| | School Site | | Stage 2 Residential Buildings | | Vehicle Drop Off |
| | Public Realm | | Stage 2 Residential Buildings | | Vehicle Drop Off |
| | East London Transit 1B | | East London Transit 1A | | Vehicle Drop Off |
| | East London Transit 1A | | Bus | | Vehicle Drop Off |
| | Bus | | Docklands Light Railway | | Vehicle Drop Off |
| | Docklands Light Railway | | East London Transit Stop | | Vehicle Drop Off |
| | East London Transit Stop | | Docklands Light Railway Station | | Vehicle Drop Off |
| | Docklands Light Railway Station | | | | Vehicle Drop Off |

Neighbourhood centre



Ground floor

- Legend
- School
 - Community
 - Shared Facility
 - Residential
 - Retail
 - Public Square/Podium
 - Sports Pitches



Upper floors

- Legend
- School
 - Community
 - Shared Facility
 - Residential
 - Retail
 - Public Square/Podium
 - Sports Pitches