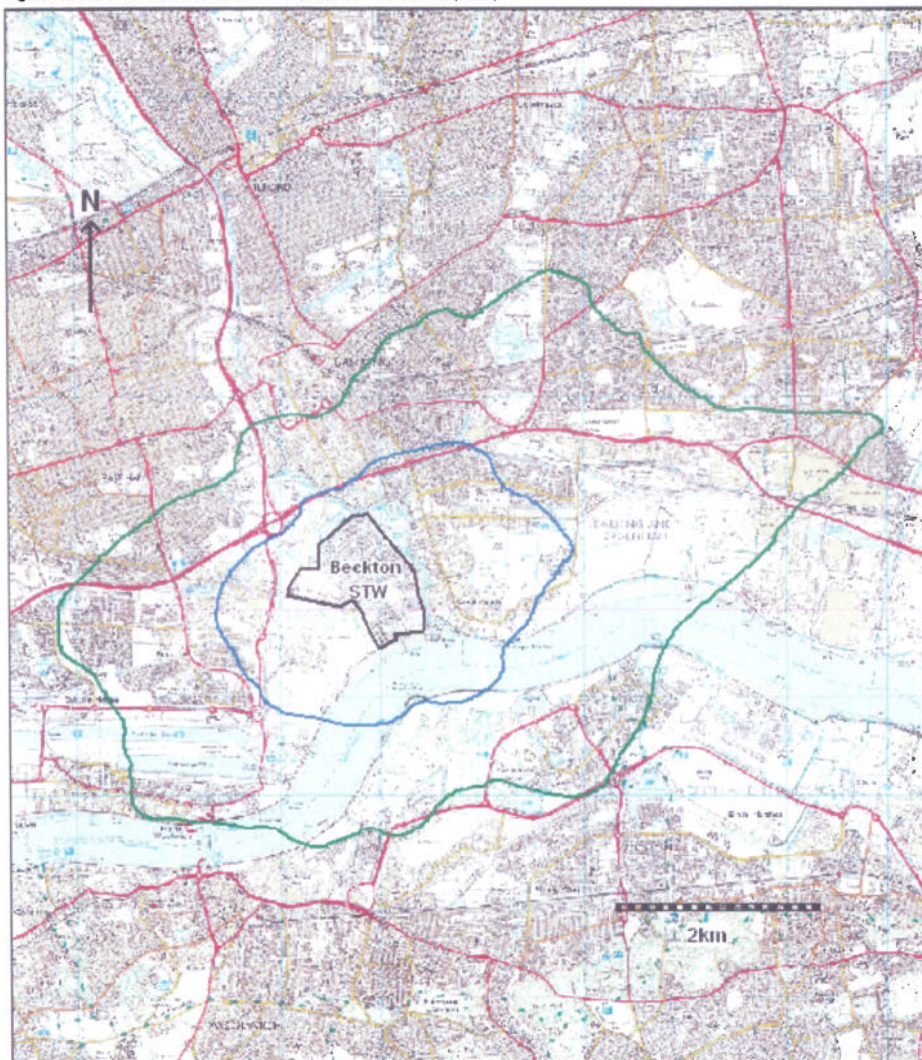


Figure 1 Results of Scenario 1: Current operational conditions (2008)



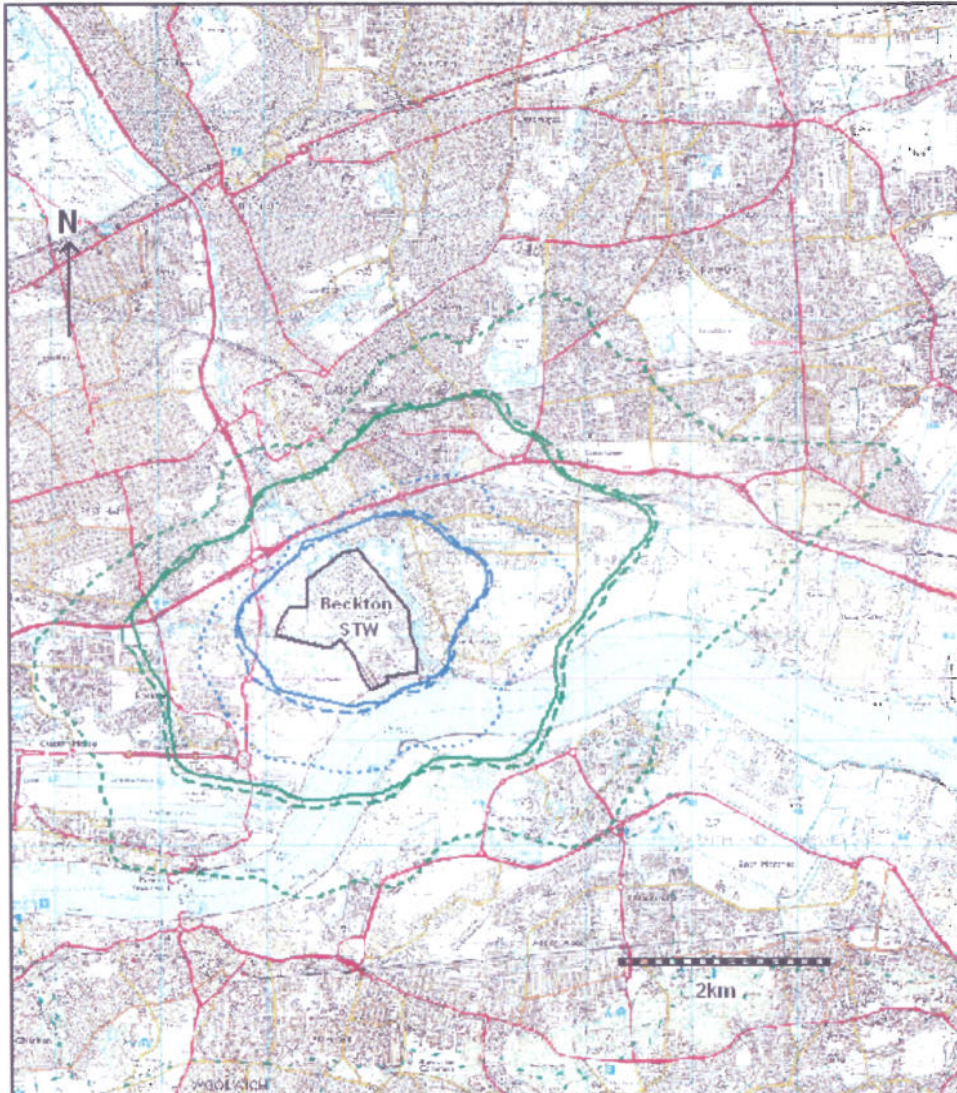
Contours of the areas are presented in which odour concentrations of $5 \text{ ou}_\text{e}/\text{m}^3$ (dark blue) and $1.5 \text{ ou}_\text{e}/\text{m}^3$ (green) are exceeded for more than 175 hours per year.

Figure 2 Results of Scenario 2: Future Baseline conditions.



Contours of the areas are presented in which odour concentrations of $5 \text{ ou}_E/\text{m}^3$ (dark blue) and $1.5 \text{ ou}_E/\text{m}^3$ (green) are exceeded for more than 175 hours per year. Isopleths for the current situation are displayed as dashed lines

Figure 3 Comparison of the predicted odour exposure generated from the works after completion of the proposed scheme



Contours of the areas are presented in which odour concentrations of 5 ou_e/m³ (dark blue) and 1.5 ou_e/m³ (green) are exceeded for more than 175 hours per year. The dashed lines depict the isopleths for the future baseline and the dotted lines for the current situation.