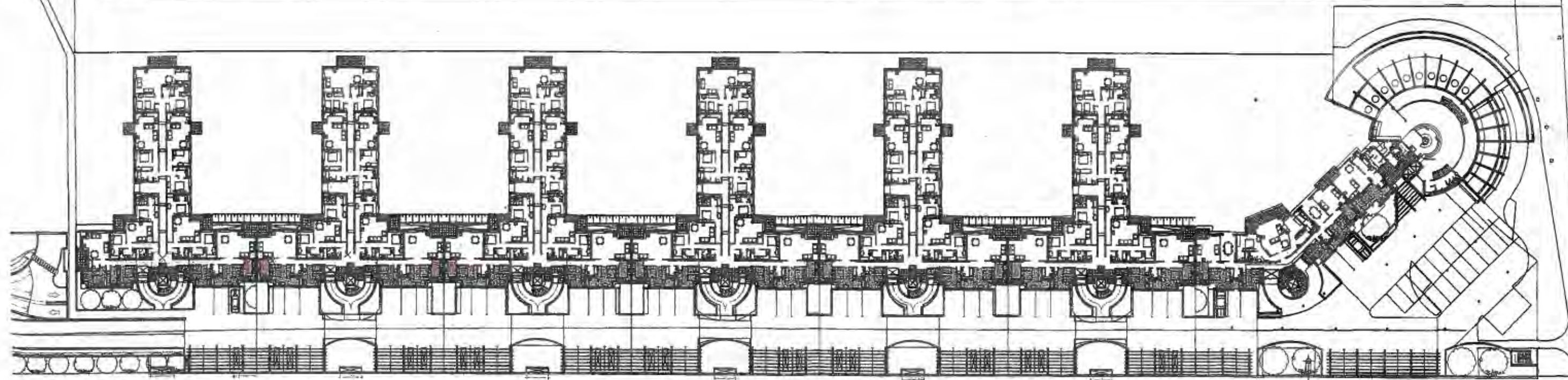


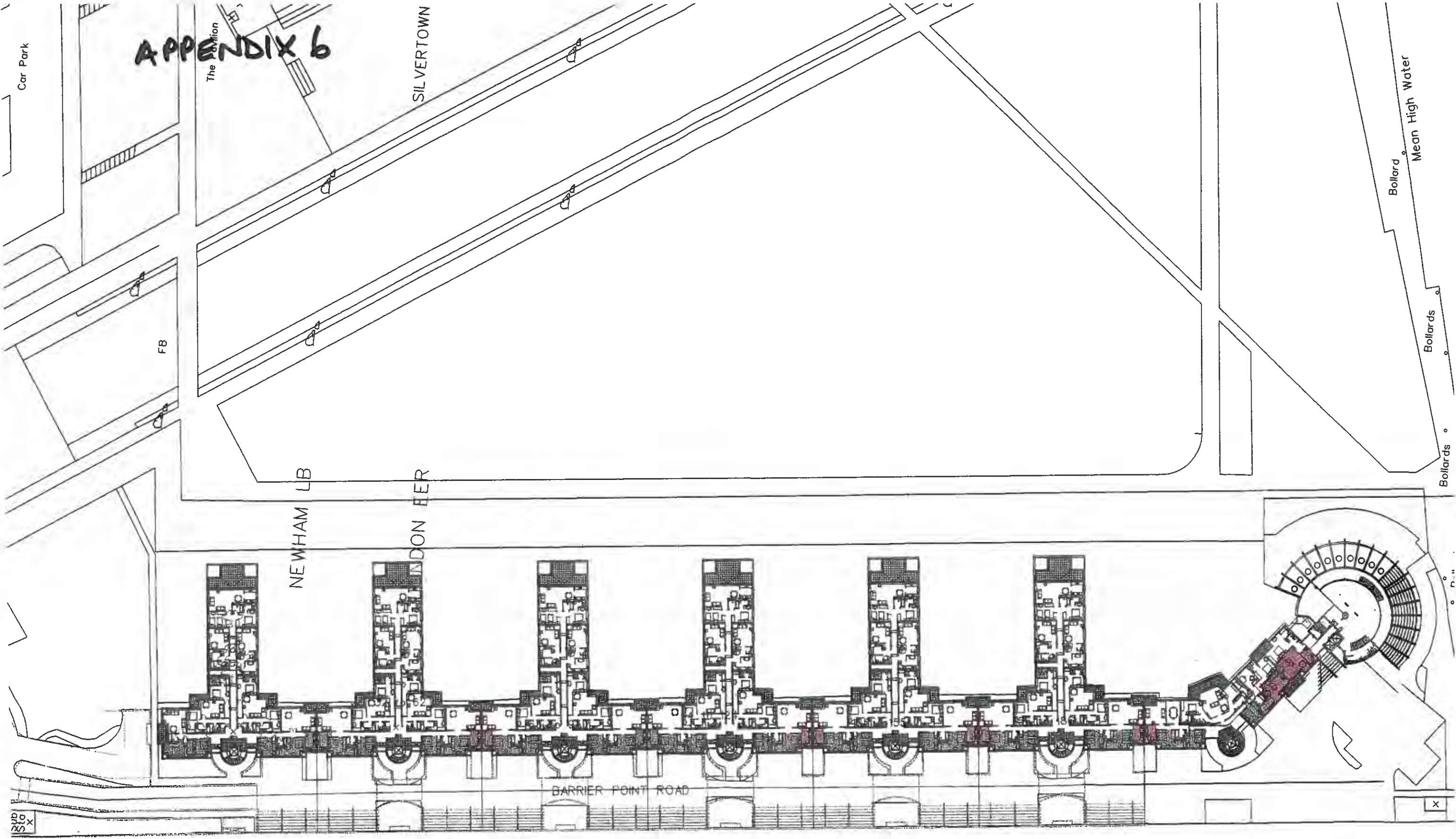
APPENDIX 6



GROUND FLOOR

DEGEN  
01 MAY 2008

APPENDIX 6



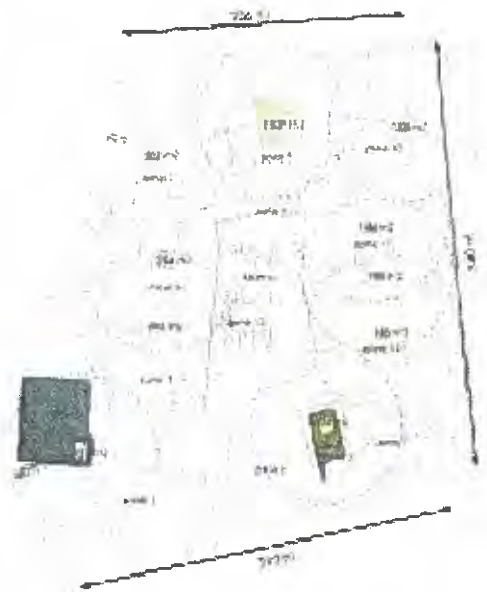
FLOORS 1-4

# APPENDIX 7

External open space	
<b>Formal play space</b>	
LAPs (playground)	2118 m <sup>2</sup>
LEAP playgrounds	705 m <sup>2</sup>
NEAP playground	3530 m <sup>2</sup>
<b>subtotal</b>	<b>6353 m<sup>2</sup></b>
<b>Flexible open space with play potential</b>	
Space with play potential	19100 m <sup>2</sup>
Marks	7157 m <sup>2</sup>
<b>subtotal</b>	<b>26257 m<sup>2</sup></b>
<b>Other public open space</b>	
Public open space	3668 m <sup>2</sup>
<b>Private Amenity Space</b>	
Ground level private amenity space	13284 m <sup>2</sup>
Ground level amenity roof	5646 m <sup>2</sup>
Private roof terraces	5646 m <sup>2</sup>
Balconies (4.5 m <sup>2</sup> per unit)	10173 m <sup>2</sup>
<b>subtotal</b>	<b>34749 m<sup>2</sup></b>
<b>Green and Brown Roofs</b>	
Green and Brown roofs	11822 m <sup>2</sup>
<b>Roads</b>	
Vehicular roadways	7228 m <sup>2</sup>
<b>Total external open space</b>	<b>112748 m<sup>2</sup></b>
<b>Internal play space</b>	
Community centre	2303 m <sup>2</sup>
<b>Total of all spaces</b>	<b>115046 m<sup>2</sup></b>



## Formal Play Areas



### PUBLIC REALM

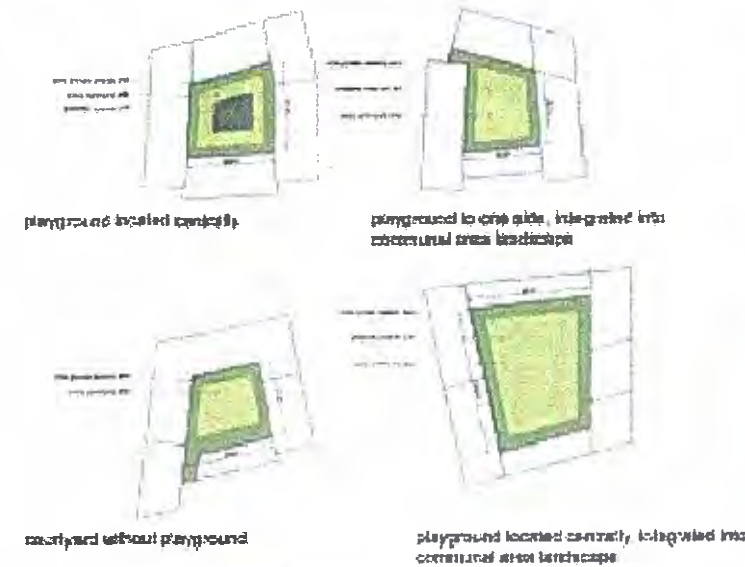
SITE AREA 54.6%

### PLAY SPACE PER CHILD

0-15 years old 8.2M2  
0-17 years old 7.4M2

- 10 no. LAPS provided, 6 within courtyards and 4 in public spaces.
- 1 no. LEAP equipped for 5-11 year olds
- 1 no. NEAP for older children, well separated from residential with passive surveillance
- All in addition to both Lyle and Barrier Parks

## Possible Courtyard Typologies

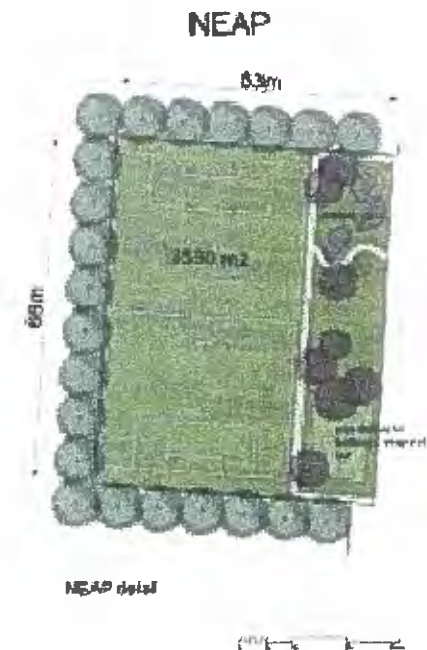


sec. A - potential section through a typical housing block showing access and lines of sight to play area

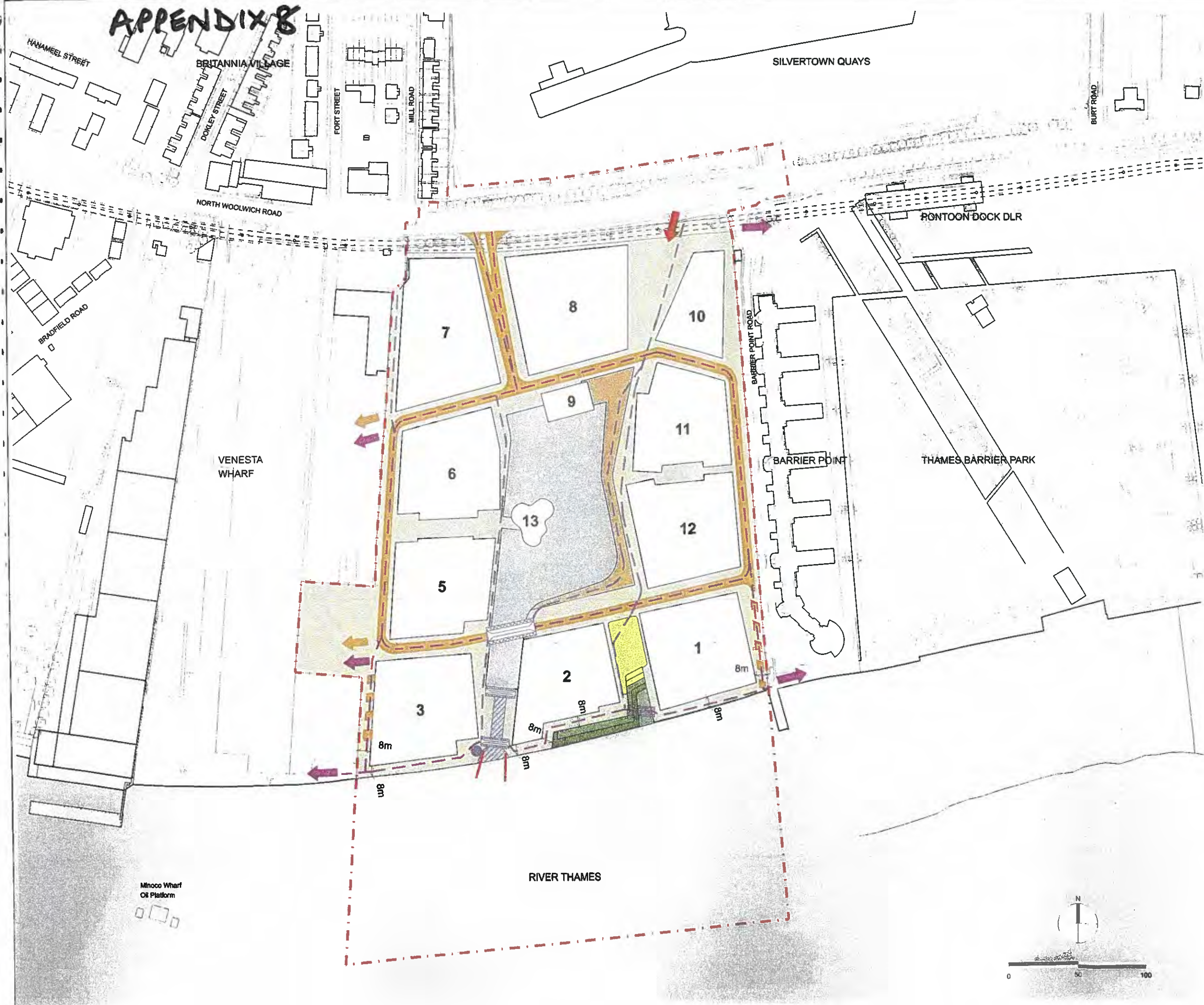
## Neighbourhood Play Spaces



The Minoco Wharf development is situated in an ideal location being almost directly adjacent to the Theatres Barber Park, and also within close proximity to Lyle Park. Theatres Barber Park is one of the crown jewels of London's respected parks and can provide a generous amount of additional space for large scale play activities for the residents of Minoco.



# APPENDIX 8



NOTES ORIGINAL A1

- COPYRIGHT RESERVED.  
DRAWING TO BE READ IN CONJUNCTION WITH  
MINOCO WHARF DEVELOPMENT SPECIFICATION  
Planning Application Boundary
- Development Zones
  - Public Realm Areas
  - Primary Route
  - Emergency Access
  - Potential Extension to Primary Route
  - Access Route
  - Pedestrian Routes
  - Pedestrian / Cycle Routes
  - Potential Extension to Pedestrian / Cycle Routes
  - Proposed Zone for Marina
  - Proposed Zone for New Bridge Structure
  - Proposed Zone for Lock and Gates
  - Proposed Location for Lock Control Room
  - Proposed Lock Pontons
  - Proposed Zone for Lower Quay
  - Proposed Zone for Sunken Garden
  - Proposed Zone for Upper Saltmarsh
  - Proposed Zone for Lower Saltmarsh
  - Proposed Zone for Intertidal Mud
  - 8m Minimum Dimension for Access to River Wall

DEVELOPMENT ZONE 4 OMITTED  
A 31/10/07 As Drawing 041121 A P Si D004 A  
DEVELOPMENT ZONE 14 OMITTED  
B 10/03/06 Development Zone 14 omitted PR

**Clearstorm Ltd**  
a wholly owned subsidiary of the Ballymore Group



SCALE	DATE	DRAWN	CHECKED
1:250 @ A1 1:500 @ A3	Nov 07	AF	PG

PROJECT  
**Minoco Wharf**  
London E16  
Parameter Plan

DRAWING  
Access Circulation and  
Infrastructure

DRAWING No.  
041121 A P Si D007 B

