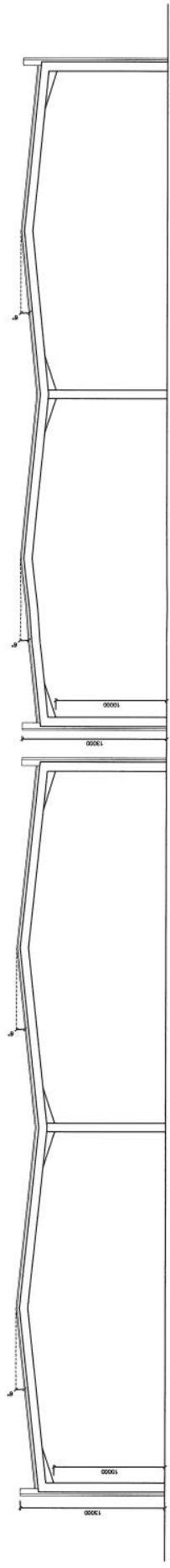


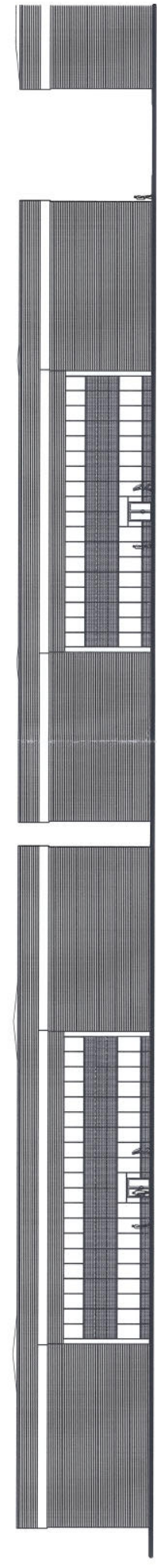
UNITS 14-15

Amendments/Notes	
No.	By
1	PH
2	PH
3	PH



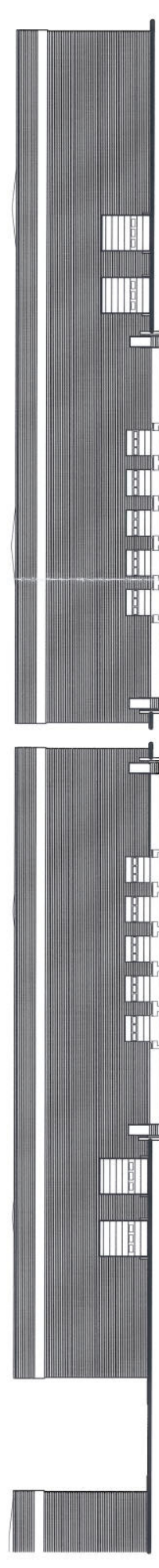
UNIT 14 - SECTION

UNIT 15 - SECTION



UNIT 14 - SOUTH ELEVATION

UNIT 14 - NORTH ELEVATION



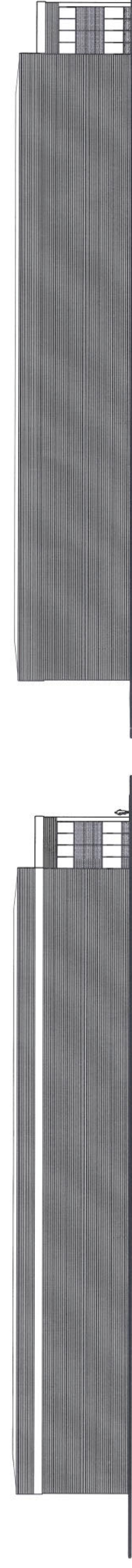
UNIT 15 - SOUTH ELEVATION

UNIT 15 - NORTH ELEVATION



UNIT 14 - EAST ELEVATION

UNIT 14 - WEST ELEVATION



UNIT 15 - EAST ELEVATION

UNIT 15 - WEST ELEVATION

07 DEC 2006

MATERIALS NOTES
WALLS: horizontal lead lined steel cladding G40-160; finished Metallic Silver PVF2. High level horizontal feature finish. Form Composite Panel and Sargasso Blue PVC 5003 1H.F.R. where required.
WINDOWS: Clear double glazed, thermally broken aluminium framed windows; PVC finished, blue to match. Curtain wall glazing to ground, & first floor offices. Acrylic blue tinted glazing with 1000mm horizontal panels. 1000mm horizontally laid composite panels between windows & curtain walling.
DOORS: Loading bay doors, steel sectional overhead doors in Acrylic yellow finish. Personnel doors, steel frames and doors.
ROOF: trapezoidal profiled metal roofing as outer sheet of built up roofing system. Colourscoat HP5200. Greening Green. With standard insulated mansard rooflights (10% of roof area)

All dimensions and levels to be checked on site by contractor prior to commencement of work. This drawing and the copyright and patent therein are the property of Graham Seabrook Partnership. This drawing is to be used in conjunction with all relevant contracts and specifications. All works are to be carried out fully in accordance with the Building Regulations, British Standards and Codes of Practice as appropriate.

Project: **THAMES GATEWAY PARK**
CHEQUERS LANE, DAGENHAM
PHASE III
 For RAVENBOURNE DEVELOPMENTS LTD
 Drawing: **FULL PLANNING APPLICATION**
UNITS 14-15 ELEVATIONS

GRAHAM SEABROOK PARTNERSHIP
 CHARTERED ARCHITECTS
 The Station Barn, Biggleswade, Peter Road, Chequers Lane, Dagenham, Essex, SS11 2JL
 t: 01304 811111 f: 01304 811112 e: info@seabrook.co.uk
 Drawn By: PH Date: October 2006
 Checked By: PH Date: 1/2006/00
 Approved By: PH Date: 1/2006/00
 Drawing No: 4032 - AL(0)53
 Rev: B

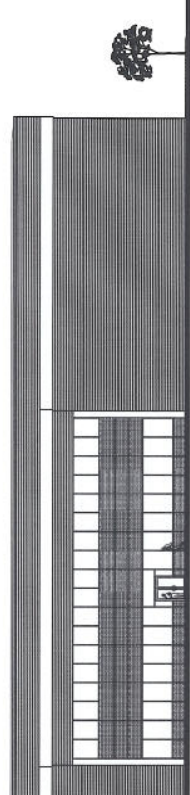
16

UNITS 16-17

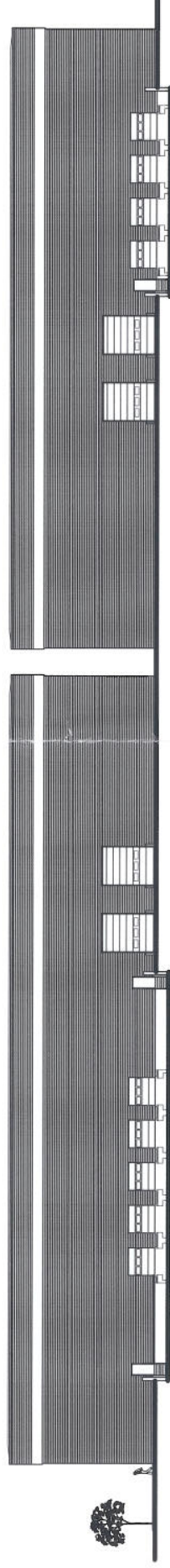
Rev	Desc	By	Date
1	Issue	PH	02/11/06
2	100% RIBA	PH	02/11/06



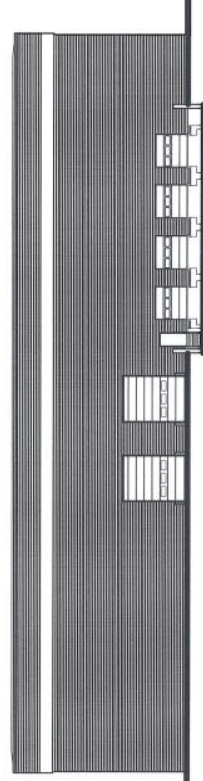
UNIT 17 - WEST ELEVATION



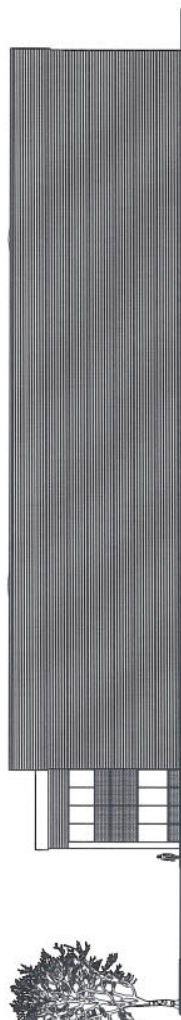
UNIT 16 - WEST ELEVATION



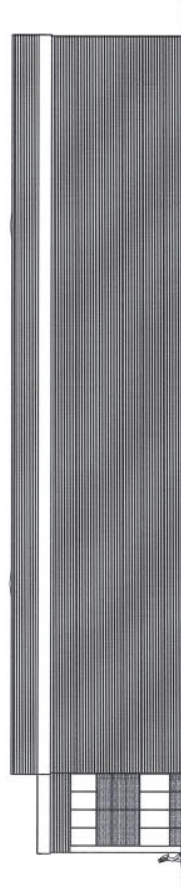
UNIT 16 - EAST ELEVATION



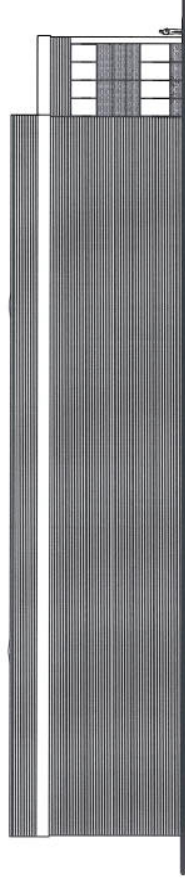
UNIT 17 - EAST ELEVATION



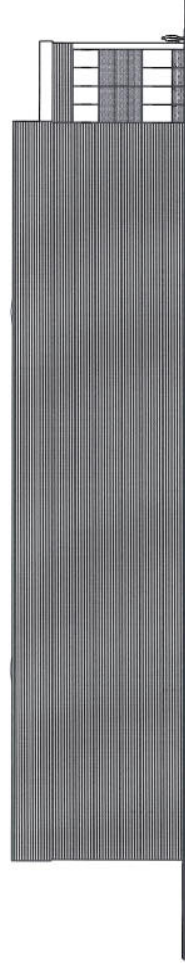
UNIT 17 - SOUTH ELEVATION



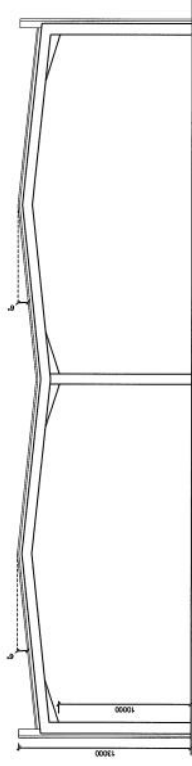
UNIT 16 - SOUTH ELEVATION



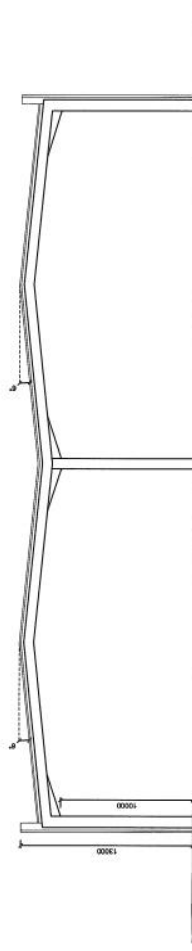
UNIT 17 - NORTH ELEVATION



UNIT 16 - NORTH ELEVATION



UNIT 17 - SECTION



UNIT 16 - SECTION

RECEIVED
07 DEC 2006

MATERIALS NOTES
WALLS
Generally horizontal half round
steel cladding G450 -150;
finished Metallic Silver PVFZ
High strength concrete
based 1000mm Composite Panel
Finished Sargasso Blue RAL
5023
1:1 F.F.R. where required.
WINDOWS
Clear double glazed, thermally
broken
UPVC framed windows
PVC finished, blue to match
Sargasso.
Curtain wall glazing to ground,
& first floor offices
Horizontal glazing with
look-alike spandrel panels,
1000mm horizontally laid
composite panels between
windows & curtain walling
DOORS
Landing bay doors, steel
sectional overhead doors in
garage
Personnel doors, steel frames
and doors.
ROOF
32mm trapezoidal profiled metal
roofing,
as outer sheet of built up roofing
system
Insulated Colourcoat HPS200
Coosaving Grey
With standard insulated mansard
rooflights (10% of roof area)

All dimensions and levels to be checked on site by contractor prior to construction.
The drawings are the property of Graham Seabrook Partnership and shall remain their property.
This drawing is to be used in conjunction with all relevant specifications and standards.
Discrepancies and variations are to be resolved in the Architect's office.
The Architect is not liable to members with
correct CDM registration and recommendations, current Building
Regulations, British Standards and Codes of Practice as appropriate.

Project
**THAMES GATEWAY PARK
CHEQUERS LANE, DAGENHAM
PHASE III**
For RIVENBOURNE DEVELOPMENTS LTD

Drawing
**FULL PLANNING APPLICATION
UNITS 16-17 ELEVATIONS**

Graham Seabrook
Partnership
Chartered Architects
The Station, King George V Road, Dagenham, Essex, S16 1LQ
Phone: 0206 877 2022 Fax: 0206 877 6111 E-mail: info@gsa.co.uk
www.gsapartnership.co.uk

Drawn By: PH Date: October 2006
Checked By: PH Date:
Approved By: PH Date:
Scale: 1:200 @ A0
Drawing No: 4032 - AL(0)54 Rev. B