

NOTES

Roof

1. Aluminium standing seam roof system spanning between primary beams inc. mansafe system (Kal-zip or similar)
2. Patent double glazed strips above eaves of each vault (within slop of roof)
3. Hot-dip galvanised pressed steel insulated valley and eaves gutters laid to falls with galvanised steel downpipes
4. Extensive green roof system, using low maintenance planting, to concrete deck with 1:40 design falls to offices
5. Galvanised hand-railing to perimeter of office roof.

Frame

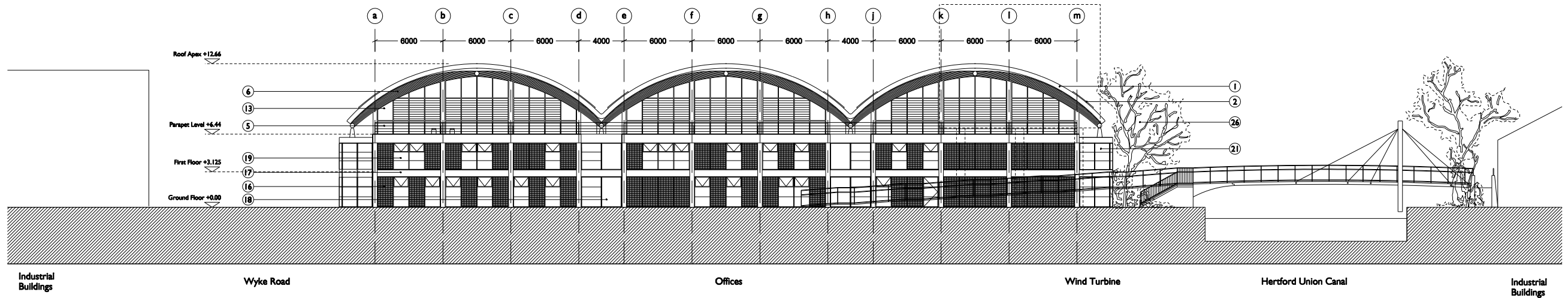
6. Glulam primary beams at 4.5m centres, with galvanised steel column connectors and steel tie cables.
7. Pair of inclined CHS steel columns supporting roof arches at 9m centres.
8. Fair-faced concrete columns with mineral silicate paint (Kelm or similar) to support flat concrete first floor and roof slab.

External Walls

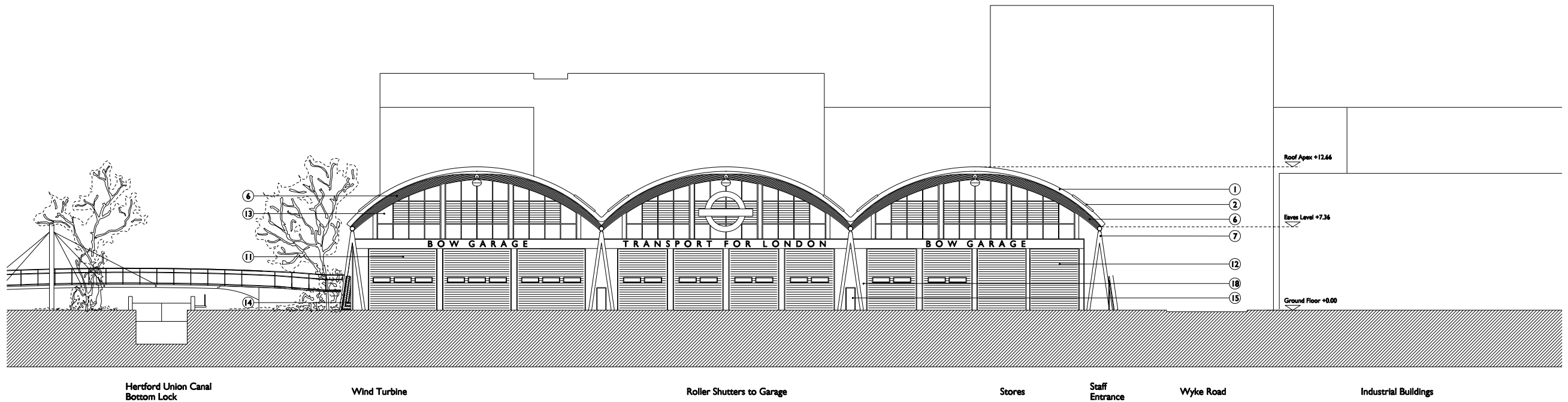
9. Perforated facade profiled aluminium sheet spanning between primary columns. Finish matching roof panels (Kal-zip or similar)
10. Gate: steel frame with polyester powder coated finish, clad with perforated aluminium sheet to match facade.
11. Aluminium roller shutters with matching cladding closers between guides.
12. Profiled aluminium sheet cladding to blockwork store wall. Finish matching roller shutters.
13. High-level clerestory glazing to suit roof profile with integrated glass louvres for natural ventilation.
14. 3m high rough concrete wall with exposed aggregate - inspired by existing concrete wall adjacent to Victoria Park and towpath
15. External steel personnel doors with polyester powder coated finish
16. Brick panels in steel frame with polyester powder coated finish
17. Precast concrete cladding to columns and floor slabs.
18. Aluminium clad panels to steel frame with polyester powder coated finish
19. Double glazed timber windows to offices with an exterior cover of aluminium (proportion opening lights)
20. Glazed external door to match office windows
21. Thermally broken timber/aluminium framed glazed curtain walling system to office facades facing canal and Wyke Rd (proportion opening lates)

Site Works

22. Timber decked terrace with galvanised perimeter handrail.
23. Existing tree retained (refer to ecological report)
24. Existing substation retained
25. Yard finishes to be concrete
26. Proposed planting of native species along canal (refer to landscape architects report)
27. External timber deck to canteen area with painted HS handrail.
28. 3m high fencing to car/bus parking along Wyke Road and Wandsbeck Road with perforated profiled aluminium sheeting.
29. Fuel Tanks
30. Gate House: Brick panels in steel frame with double glazed timber windows with exterior cover of aluminium



Roach Road Elevation



Parking Elevation

PLANNING ISSUE

Unless indicated opposite, this drawing is for information only	Work Package	Tender	Briefing	Construction	Date	Revision	General design revision, Landscaping added	Project: TFL Bus Garage - Wyke Road
Do not scale. Use figured dimensions only. All dimensions to be checked on site.					20.12.06	A		
Original size : A1					03.01.07	B	Parking elevation updated	Subject: Proposed Road Rd Elevation & Proposed Parking Elevation
					10.01.07	C	Garage signage lettering added	Scale: 1:200 Date: 01.12.06 Project Ref: WYKE Drwg. No: 200/A/61 Rev: D
					01.02.07	D	Planning Issue	Architect: PRINGLE-RICHARDS-SHARRATT:LTD Studio 11, Canterbury Court, 1 Britton Road, London, SW9 6DE

NOTES

Roof

- 1. Aluminium standing seam roof system spanning between primary beams inc. mansafe system (Kal-zip or similar)
- 2. Patent double glazed strips above eaves of each vault (within slop of roof)
- 3. Hot-dip galvanised pressed steel insulated valley and eaves gutters laid to falls with galvanised steel downpipes
- 4. Extensive green roof system, using low maintenance planting, to concrete deck with 1:40 design falls to offices
- 5. Galvanised hand-railing to perimeter of office roof.

Frame

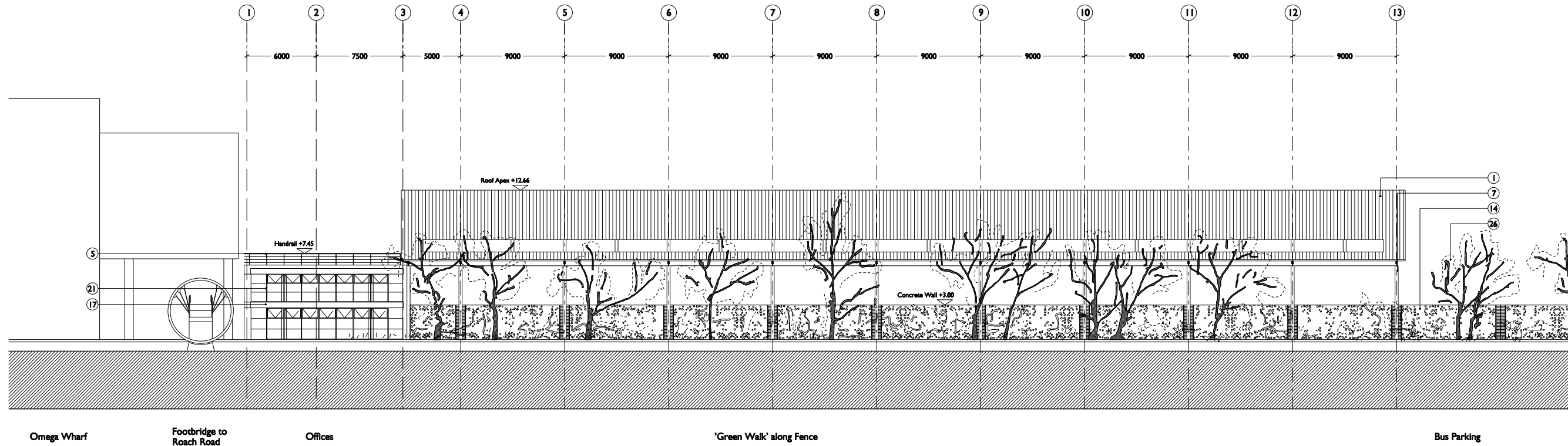
- 6. Glulam primary beams at 4.5m centres, with galvanised steel column connectors and steel tie cables.
- 7. Pair of inclined CHS steel columns supporting roof arches at 9m centres.
- 8. Fair-faced concrete columns with mineral silicate paint (Kelm or similar) to support flat concrete first floor and roof slab.

External Walls

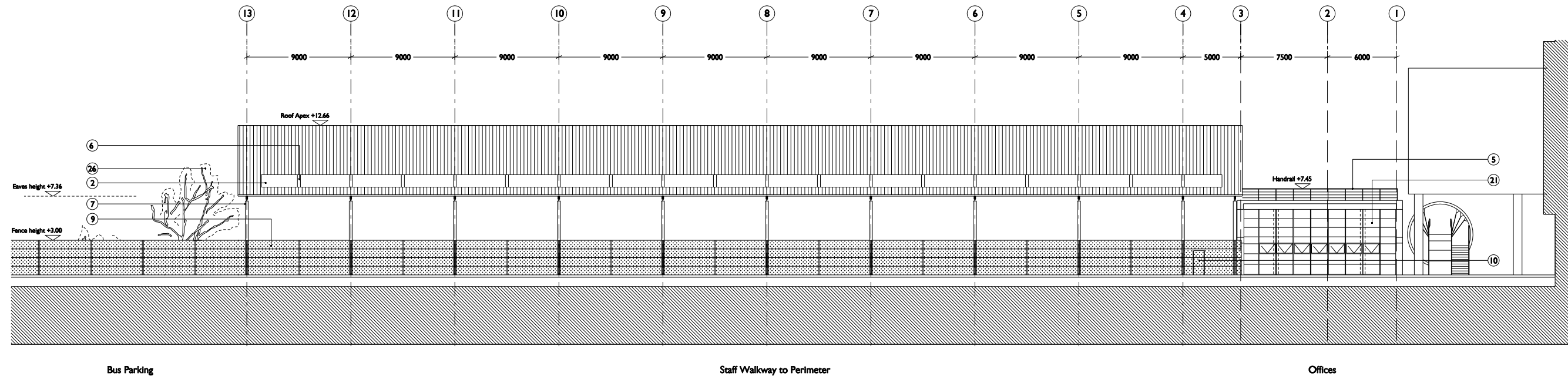
- 9. Perforated facade profiled aluminium sheet spanning between primary columns. Finish matching roof panels (Kal-zip or similar)
- 10. Gate: steel frame with polyester powder coated finish, clad with perforated aluminium sheet to match facade.
- 11. Aluminium roller shutters with matching cladding closers between guides.
- 12. Profiled aluminium sheet cladding to blockwork store wall. Finish matching roller shutters.
- 13. High-level clerestory glazing to suit roof profile with integrated glass louvres for natural ventilation.
- 14. 3m high rough concrete wall with exposed aggregate - inspired by existing concrete wall adjacent to Victoria Park and towpath
- 15. External steel personnel doors with polyester powder coated finish
- 16. Brick panels in steel frame with polyester powder coated finish
- 17. Precast concrete cladding to columns and floor slabs.
- 18. Aluminium clad panels to steel frame with polyester powder coated finish
- 19. Double glazed timber windows to offices with an exterior cover of aluminium (proportion opening lights)
- 20. Glazed external door to match office windows
- 21. Thermally broken timber/aluminium framed glazed curtain walling system to office facades facing canal and Wyke Rd (proportion opening lates)

Site Works

- 22. Timber decked terrace with galvanised perimeter handrail.
- 23. Existing tree retained (refer to ecological report)
- 24. Existing substation retained
- 25. Yard finishes to be concrete
- 26. Proposed planting of native species along canal (refer to landscape architects report)
- 27. External timber deck to canteen area with painted MS handrail.
- 28. 3m high fencing to car/bus parking along Wyke Road and Wandsbeck Road with perforated profiled aluminium sheeting.
- 29. Fuel Tanks
- 30. Gate House: Brick panels in steel frame with double glazed timber windows with exterior cover of aluminium



Hertford Union Canal Elevation



Parking Elevation

PLANNING ISSUE

Unless indicated opposite, this drawing is for information only	Work Package	Tender	Briefing	Construction	Date	Revision	General design revision	Project: TfL Bus Garage - Wyke Road
Do not scale. Use figured dimensions only. All dimensions to be checked on site.					20.12.06	A	Perimeter concrete wall design revised	Subject: Proposed Canal Elevation & Proposed Wyke Rd Elevation
Original size : A1					09.01.07	B	Planning Issue	Scale: 1:200 Date: 01.12.06 Project Ref: WYKE Drwg. No: 200/A/62 Rev: C
© Pringle Richards Sharratt Ltd. Registered in England No. 3189549					01.02.07	C		Architect: PRINGLERICHARDS.SHARRATT.LTD Studio 11, Canterbury Court, 1 Britton Road, London, SW9 6DE