

DO NOT SCALE PLANNING DRAWING
USE MEASURED DIMENSIONS ONLY



Proposed Site Plan

revision	date	notes
B	may 06	landscape adjusted to incorporate with Atkins Transport Planning's drawing regarding swept path for servicing vehicles.
A	feb 06	CHP plants added to blocks A, C & D

scale	date	drawn by	drawing no
NTS	Aug 05	ADW	203038/PA/100B

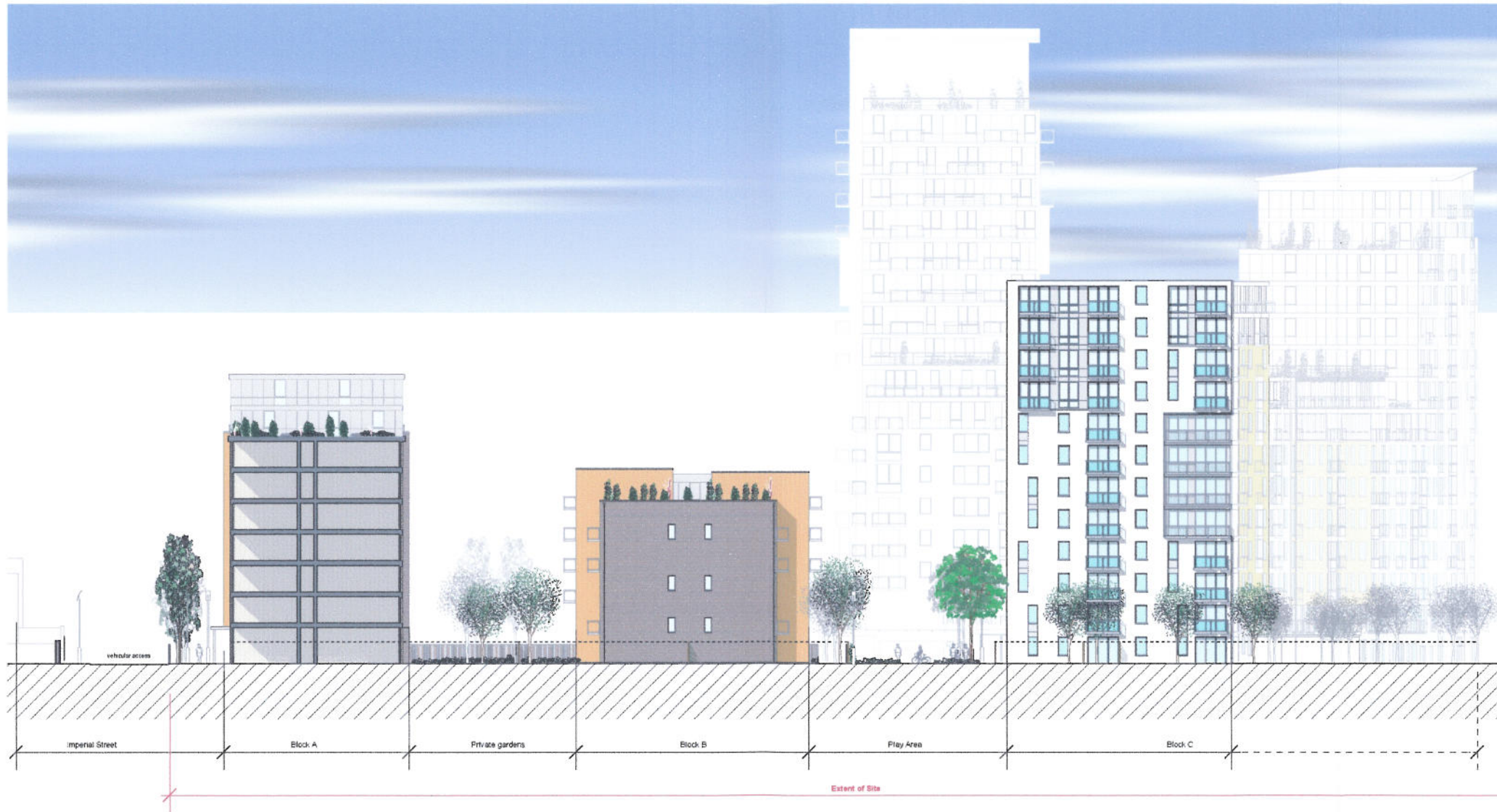
project
Pelican Wharf
Trad Site - Imperial Street, E3
for
Aitch Group
drawing title
Proposed
Site Plan



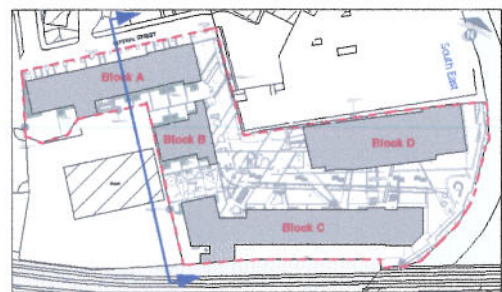
81 Maygrove Road,
London, NW6 2EG

Telephone 020 7328 6122
Fax 020 7328 9849
E-mail info@kkmarchitects.com

in association with
Moren Gregory



South East Sectional Elevation
(Blocks A, B & C)



Key Plan 1:3500

Materials and Cladding
The proposed development will be constructed from the following materials:
Brick - Yellow / brown stock
Metal Cladding
Curtain walling
Yellow/orange & white through colour render
Galvanised steel balconies with mesh or glass panels
Flat roofs

revision	date	notes
A	Mar 06	space for CHP added at ground floor Block C, chimneys indicated
scale	date	drawn by
NTS	Aug 05	ADW
		drawing no
		203038/PA/133A

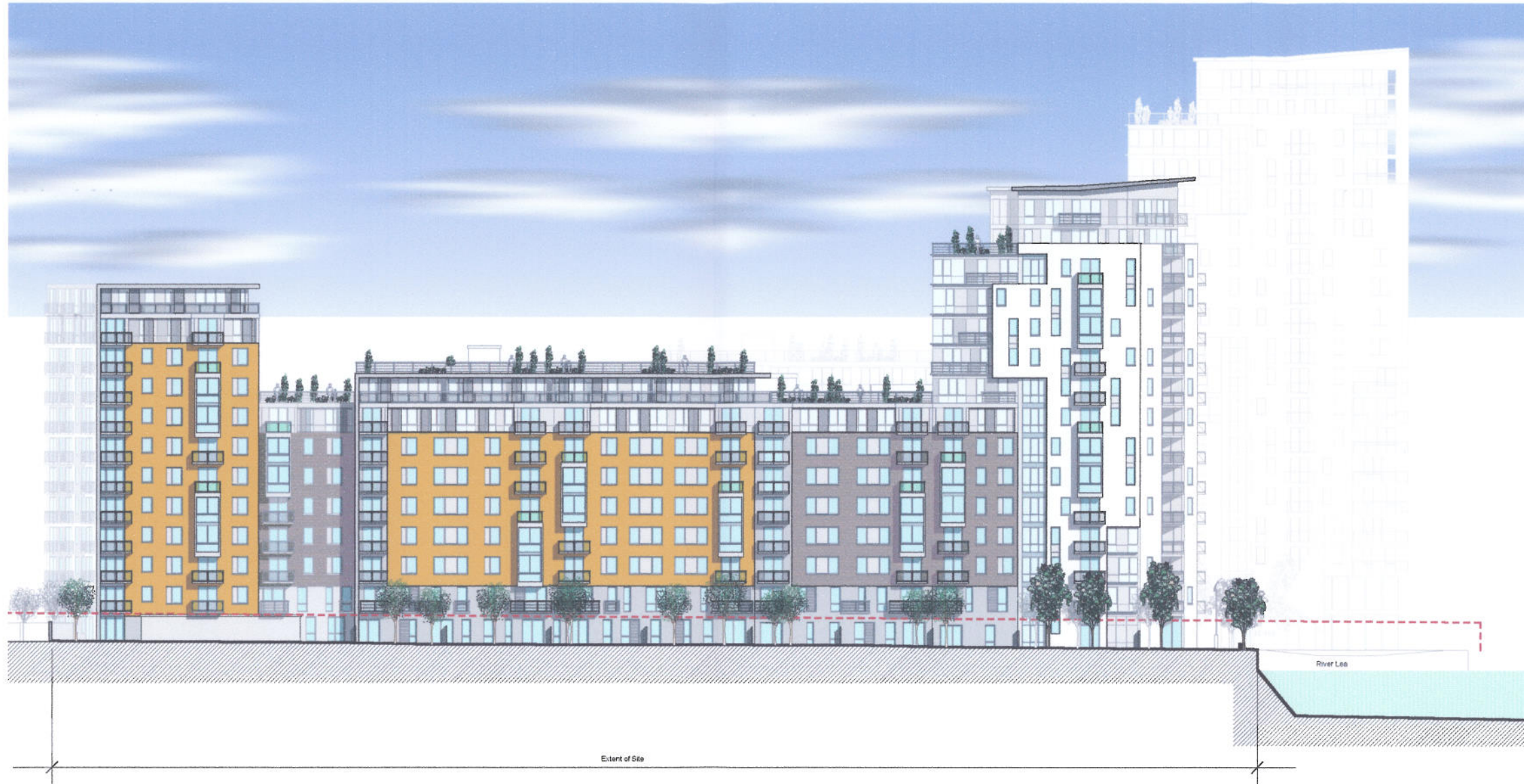
project
Pelican Wharf
Trad Site - Imperial Street, E3
for
Aitch Group
drawing title
Proposed
South East Sectional
Elevation (Blocks A, B & C)

81 Maygrove Road,
London, NW6 2EG

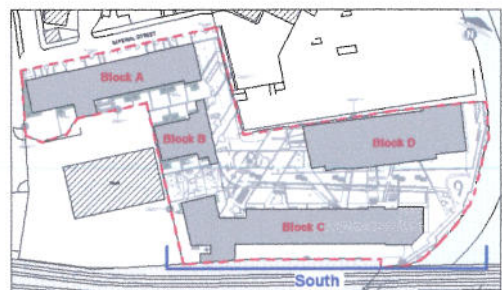
Telephone 020 7328 8122
Fax 020 7328 9849
E-mail info@kkmarchitects.com

K K M
architects

in association with
Moren | Gregory



South Elevation (Block C)



Key Plan 1:3500

Materials and Cladding
 The proposed development will be constructed from the following materials:
 Brick - Yellow / brown stock
 Metal Cladding
 Curtain walling
 Yellow/orange through colour render
 Cladded steel balconies with mesh or glass panels
 Flat roofs

B	Aug 06	alteration to windows in Core D1
A	Mar 06	space for CHP added at ground floor Block C, chimneys indicated

revision	date	notes
NTS	Aug 05	ADW

scale	date	drawn by	drawing no
NTS	Aug 05	ADW	203038/PA/135 B

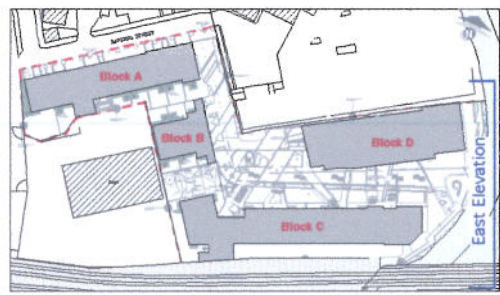
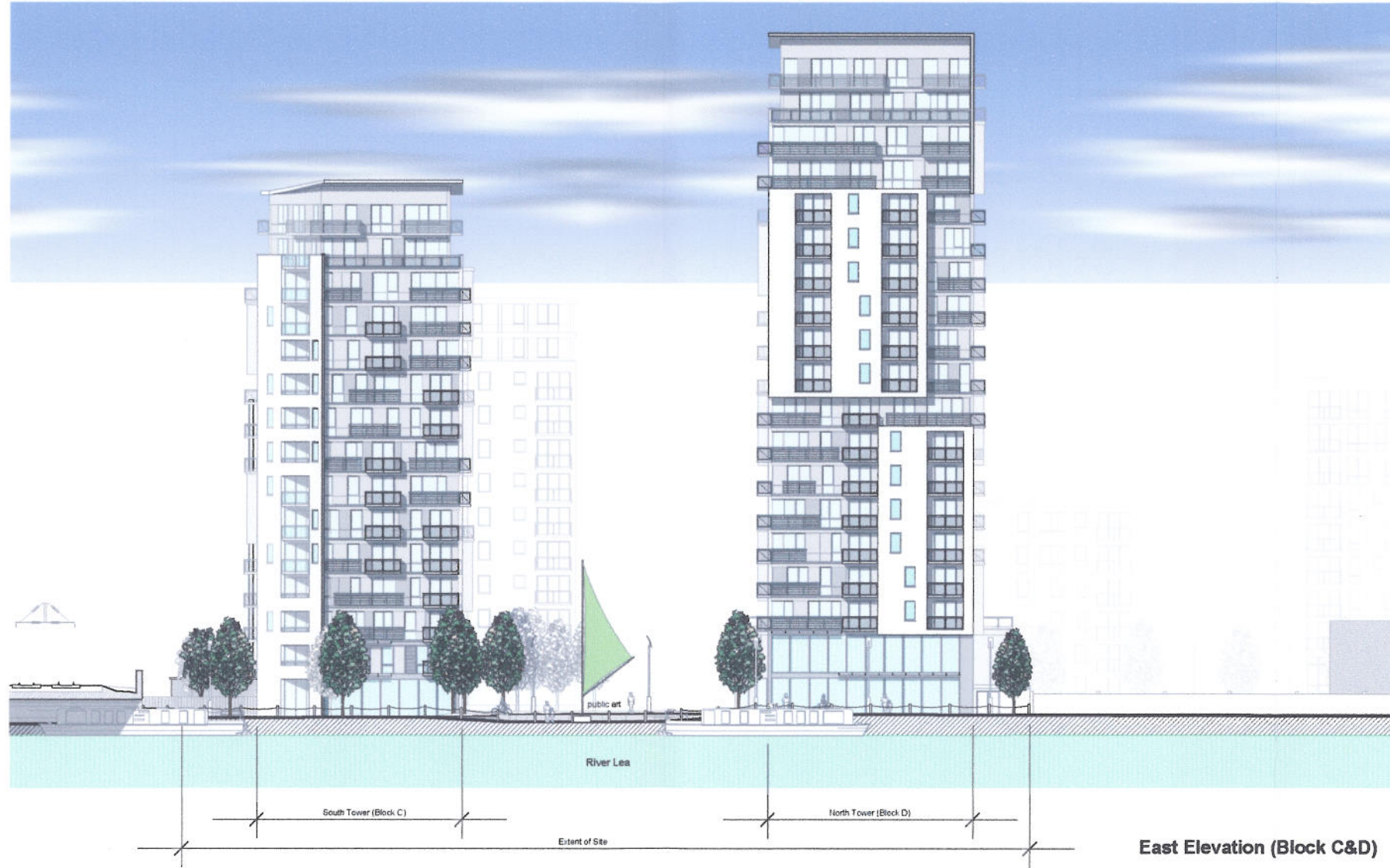
project
 Pelican Wharf
 Trad Site - Imperial Street, E3
 for
 Aitch Group
 drawing title
 Proposed
 South Elevation (Block C)

KKM
 architects

81 Maygrove Road,
 London, NW6 2EG

Telephone 020 7328 9122
 Fax 020 7328 9849
 E-mail info@kkmarchitects.com


in association with
 Moren Gregory



Key Plan 1:3500

Materials and Cladding
 The proposed development will be constructed from the following materials:
 Brick - Yellow / brown stock
 Metal Cladding
 Curtain walling
 Yellow/orange through colour render
 Glazed steel balconies with mesh or glass panels
 Flat roofs

revision	date	notes	
scale	date	drawn by	drawing no
NTS	Aug 05	ADW	203038/PA/ 136

project		81 Maygrove Road, London, NW6 2EG	
Pelican Wharf Trad Site - Imperial Street, E3			
for			
Aitch Group			
drawing title		Telephone 020 7328 8122 Fax 020 7328 9849 E-mail info@kkmarchitects.com	
Proposed East Elevation (Block C&D)		in association with Moren Gregory	